

Meat and Livestock Review & Outlook 2015/16

Statistical Appendices

Cattle and Beef

Irish Beef Balance Sheet, 2005-2016(f**) ('000 tonnes cwe)

	2005	2006	2007	2008	2009	2010	2011	2012	2013	2014	2015 (e)	2016 (f**)
GIP Production*	567	599	603	560	556	603	581	529	550	628	591	619
Net Production*	542	567	581	537	514	559	547	495	518	583	564.1	583
+ Beef Imports	30	35	35	42	40	49	55	47	35	30	33	29
- Beef Exports (1)	484	512	525	487	462	516	510	453	466	524	510	526
of which:												
Commerical	484	512	525	487	462	516	510	453	466	524	510	526
Stock Change (2)	0	0	0	0	0	0	0	0	0	0	1	1
Consumption (3)												
- '000 tonnes cwe	88	90	91	92	92	92	92	89	87	88	87.1	86
- Kg/head	21.3	21.3	21.0	20.8	20.6	20.2	20.1	19.4	18.9	19.1	18.8	18.5

Source: CSO/Bord Bia Estimates

Note: Figures are rounded

* excludes animals removed under BSE control programmes

**figures are subject to review and 2016 are forecast figures

(1) Includes sales of Intervention beef

(2) Changes in public stocks, market support schemes such as PFD & SPS and private stock changes due to exceptional market conditions

(3) Residual figure after allowing for stock changes

Irish Cattle Numbers, June 2005-2015 ('000 head)

	2005	2006	2007	2008	2009	2010	2011	2012	2013	2014	2015
Total Cattle	6,604	6,531	6,334	6,937	6,891	6,607	6,493	6,754	6,903	6,926	6,964
Cows	2,342	2,325	2,268	2,315	2,301	2,229	2,240	2,289	2,314	2,355	2,372
- Dairy	1,114	1,109	1,087	1,095	1,097	1,071	1,117	1,141	1,163	1,226	1295.8
- Other	1,228	1,215	1,181	1,220	1,204	1,158	1,123	1,149	1,150	1,129	1075.8
Bulls	68	69	68	58	55	52	42	36	41	41	37
Two years old & over	929	951	928	902	910	932	837	733	768	884	808
- Male	619	640	615	476	501	506	425.5	360.6	388	455.9	423.8
- Female	310	312	314	390	409	426	411.9	372	380	428.4	384.4
One to two years	1,575	1,554	1,476	1,704	1,735	1,632	1,528	1,660	1,811	1,767	1,705
- Male	940	916	844	832	851	760	673.4	770.2	873	821	789.6
- Female	635	638	632	872	884	872	854.7	889.8	938	947	915.5
Under one year	1,690	1,632	1,594	1,958	1,889	1,761	1,846	2,036	1,969	1,878	2,042
- Male	843	802	785	969	918	827	891.9	1,023	959	902	994.4
- Female	847	830	809	989	971	935	953.6	1,013	1,009	977	1047.8

Source: CSO

Figures may vary slightly due to rounding

Figures subject to revision as soon as updated figures are made available

Irish Cattle Throughput at Export Meat Plants, 2005-2015 ('000 head)

	2005	2006	2007	2008	2009	2010	2011	2012	2013	2014	2015
Total Cattle	1,606	1,691	1,691	1,591	1,525	1,643	1,570	1,401	1,499	1,644	1,561
- Steers	785	811	779	706	636	664	578	468	530	612	632
- Heifers	362	418	425	415	405	444	415	354	377	430	413
- Cows	342	358	357	330	330	337	337	330	368	367	321
- Young Bulls	95	79	105	109	120	150	185	209	187	188	157
- Others	22	25	25	31	34	48	55	40	37	47	38

Average Cattle Carcase Weights, 2005-2015 (kg)

	2005	2006	2007	2008	2009	2010	2011	2012	2013	2014	2015
Steers	352	351	358	352	357	356	362	365	349	352	358
Heifers	286	287	291	288	289	294	302	306	304	309	314
Cows	304	301	305	304	298	309	315	311	302	315	317
Young Bulls	351	362	368	360	360	358	368	372	357	364	372

Source: Department of Agriculture, Food and the Marine

Irish Beef Exports, 2005 - 2015 ('000 tonnes cwe)

	2005	2006	2007	2008	2009	2010	2011	2012	2013	2014	2015 (e)
Total	484	512	525	487	462	516	510	453	466	524	510
of which to:											
UK	260	267	278	261	244	273	254	237	247	271	275
Cont. EU	192	215	241	221	215	227	237	211	211	238	221
- France	45	55	56	54	55	59	55	49	52	55	52
- Italy	42	47	48	45	42	42	42	41	37	47	38
- Holland	40	41	47	42	39	40	42	37	39	41	40
- Scandinavia	33	35	42	44	40	39	46	40	40	44	42
- Spain	14	16	18	13	13	14	15	14	13	11	10
- Portugal	9	10	11	10	12	8	3	3	3	4	3
- Other*	9	11	19	13	11	15	19	13	10	15	15
- Germany					6	10	14	15	17	21	21
Int. mkts	32	30	6	5	3	16	19	5	8	15	14
- Russia	24	24	4	2	1	8	12	2	2	3	0
- Egypt	1	0	0	0	0	0	0	0	0	0	0
- Other	7	6	2	3	2	8	7	3	7	12	14

Source: Bord Bia estimates

* includes New Member States from 2004

(e) 2007 figures estimated

Note: Figures for 2015 are subject to review may not add up due to rounding

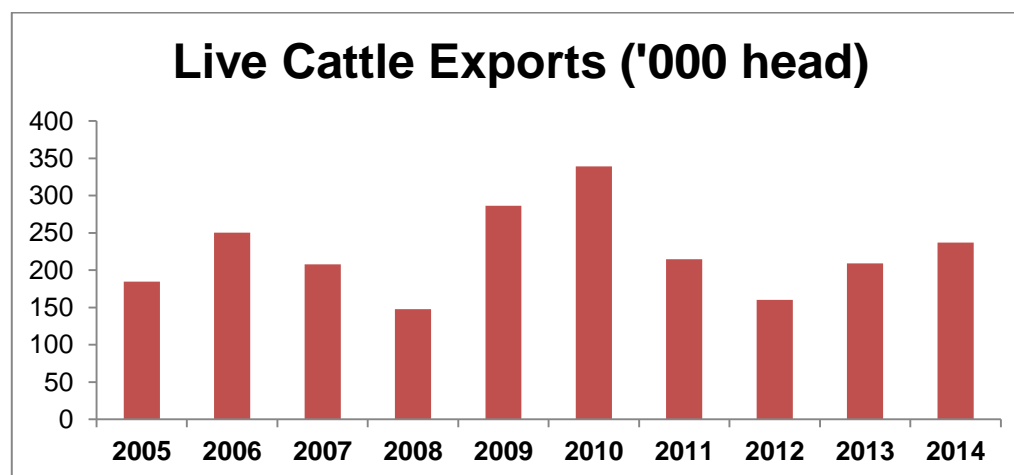
Irish Live Cattle Exports, 2005-2015 ('000 head)

	2005	2006	2007	2008	2009*	2010*	2011*	2012*	2013*	2014*	2015*
Total	184	250	208	148	286	339	215	160	209	237	178
of which to:											
Int. Mkts	9	0	1	0	0	3	4	5	20	22	4
- Lebanon	9	0	0	0	0	0	0	0	0	0	0
- Libya	0	0	0	0	0	0	0	0	15	18	0
- Other	0	0	1	0	0	3	4	5	5	4	4
Cont. EU	148	221	171	113	196	232	144	81	125	142	109
- Spain	50	72	64	27	49	61	25	15	37	44	30
- Italy	47	67	47	47	56	71	54	38	26	30	25
- Holland	44	52	41	27	69	62	34	15	32	38	44
- France	5	12	10	3	2	3	1	0	7	5	9
- Belgium	1	17	7	9	19	34	26	8	20	22	0
- Other	0	1	1	1	2	2	3	5	3	3	1
United Kingdom	27	29	36	35	90	104	67	74	66	73	65

Source: DAFM

NOTE: From 2002, live exports are based on CMMS database & are not directly comparable with earlier years

*From 2009 onwards figure reflects 52 weeks ending (figures may not add up due to rounding)



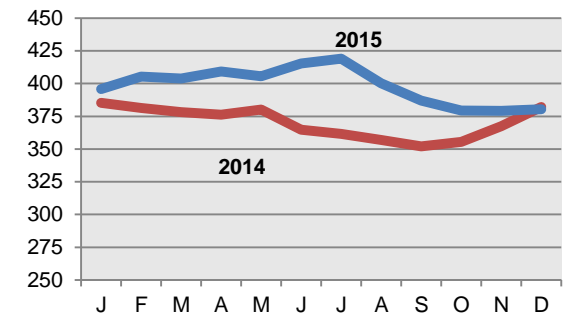
Irish Cattle Prices by Month, 2005-2015 (c/kg dw excl VAT)

R3 Steers

	2005	2006	2007	2008	2009	2010	2011	2012	2013	2014	2015
	c/kg	c/kg	c/kg	c/kg	c/kg	c/kg	c/kg	c/kg	c/kg	c/kg	c/kg
January	267.1	278.6	283.9	297.2	296.9	281.9	322.6	394.5	398.7	385.2	395.9
February	277.5	279.5	284.9	313.8	301.8	283.2	320.1	383.2	400.7	381.4	405.4
March	280.4	284.7	282.5	320.3	293.5	284.6	320.8	387.9	412.6	378.1	403.8
April	282.0	290.2	284.2	327.0	293.9	287.4	330.5	392.1	421.9	376.2	409.1
May	281.9	293.2	276.0	326.0	295.2	293.0	352.2	396.9	430.8	380.1	405.5
June	279.3	290.5	277.1	339.6	305.1	300.6	346.3	403.2	440.7	364.9	415.3
July	256.6	278.1	271.0	328.8	290.2	296.2	344.6	396.2	416.9	361.5	419.0
August	238.7	270	271.5	325.1	280.2	298.1	346.3	382.7	403.2	356.8	400.3
September	235.2	276.2	271.3	320.3	279.1	290.5	342.5	372.3	389.9	352.0	387.0
October	235.3	279.3	266.6	310.1	270.5	285.1	341.9	367.9	388.0	355.5	379.4
November	251.5	279.1	269.8	301.5	267.4	284.6	367.4	373.7	387.1	367.5	379.1
December	269.5	279.1	275.1	301.3	270.7	302.9	382.3	385.3	386.3	382.0	380.3
YEAR	262.9	281.6	276.2	317.6	287.0	290.7	343.1	386.3	406.4	370.1	398.3

Source: DAFM

Irish R3 Steer Prices, 2015 V's 2014
(c/kg dw excl. VAT)

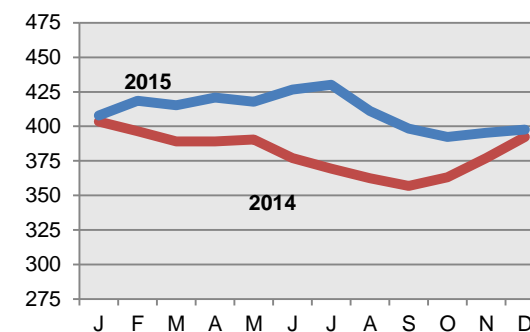


R3 Heifers

	2005	2006	2007	2008	2009	2010	2011	2012	2013	2014	2015
	c/kg	c/kg	c/kg	c/kg	c/kg	c/kg	c/kg	c/kg	c/kg	c/kg	c/kg
January	268.4	279.1	286.5	300.7	302.9	290.1	331.2	405.0	416.5	403.5	407.9
February	277.7	279.9	287.3	316.5	305.8	290.8	329.9	394.7	418.5	396.6	418.5
March	281.1	285.5	285.9	323.2	298.0	292.3	330.2	399.9	432.9	389.0	415.2
April	283.7	291.1	287.6	329.9	299.7	294.9	338.9	405.4	446.0	389.1	420.8
May	283.9	294.0	280.3	329.5	300.1	299.7	360.0	409.7	456.1	390.6	417.8
June	282.3	292.7	283.0	342.2	308.9	307.9	355.4	415.9	465.1	377.1	426.7
July	263.8	282.3	278.7	332.8	296.1	304.3	353.1	409.0	434.2	369.5	430.2
August	249.4	274.0	279.0	330.1	286.7	306.4	356.5	396.7	415.6	362.4	411.0
September	246.4	279.5	278.8	326.0	286.3	298.8	354.0	386.3	400.9	356.9	398.4
October	244.8	282.4	274.4	317.7	277.0	293.4	354.2	382.7	400.3	363.2	392.4
November	258.7	282.4	277.4	308.9	275.6	293.5	378.9	390.2	402.3	377.2	395.3
December	270.8	283.8	284.9	308.9	280.4	310.8	393.3	404.2	403.8	392.5	397.7
YEAR	267.6	283.9	282.0	322.2	293.1	298.6	353.0	400.0	424.3	380.6	411.0

Source: DAFM

Irish R3 Heifer Prices, 2015 V's 2014
(c/kg dw excl. VAT)

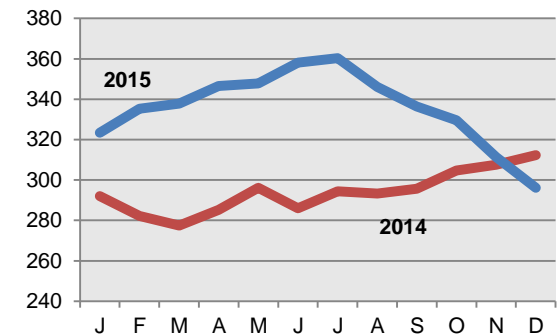


O3 Cows

	2005 c/kg	2006 c/kg	2007 c/kg	2008 c/kg	2009 c/kg	2010 c/kg	2011 c/kg	2012 c/kg	2013 c/kg	2014 c/kg	2015 c/kg
January	205.2	228.8	230.1	242.0	245.0	229.0	271.7	332.8	332.9	292.1	323.4
February	220.0	233.2	232.0	262.3	253.6	231.2	271.6	332.1	331.4	282.1	335.3
March	227.8	241.6	231.8	271.0	248.0	234.7	272.5	338.7	342.0	277.5	337.8
April	230.0	249.1	234.5	277.2	251.3	241.6	281.2	345.3	348.3	285.3	346.5
May	228.9	252.7	227.7	279.8	250.7	253.5	299.1	351.9	355.2	296.2	347.8
June	213.7	235.4	226.9	287.5	258.8	259.2	285.8	350.4	354.4	286.1	358.1
July	190.7	216.9	213.2	273.0	231.9	240.2	285.7	340.6	318.7	294.4	360.3
August	189.9	218.1	216.3	271.9	222.0	246.4	292.9	325.5	316.6	293.3	346.1
September	193.6	225.0	218.2	274.3	222.9	239.7	294.3	313.1	313.4	295.7	336.5
October	187.9	227.0	215.9	267.6	217.2	235.5	295.7	309.2	315.7	304.8	329.6
November	198.9	226.4	219.3	252.5	212.3	234.7	313.3	314.0	303.6	307.6	311.3
December	209.7	221.2	223.1	248.8	212.5	252.9	321.5	321.6	290.8	312.3	296.2
YEAR	208.0	231.3	224.1	267.3	235.5	241.6	290.4	331.3	326.9	293.9	335.7

Source: DAFM

Irish O3 Cow Prices, 2015 V's 2014
(c/kg dw excl. VAT)



Quarterly Cattle Slaughterings at Meat Export Premises 2005 - 2015 ('000 head)

Steers

	2005	2006	2007	2008	2009	2010	2011	2012	2013	2014	2015
First Quarter	172	191	178	154	132	148	123	91	107	121	143
<i>% of Total</i>	21.9%	23.6%	22.9%	21.8%	20.8%	22.3%	21.3%	19.4%	20.2	19.8	22.3
Second Quarter	134	187	171	157	134	144	127	90	107	130	140
<i>% of Total</i>	17.1%	23.1%	22.0%	22.2%	21.1%	21.7%	22.0%	19.2%	20.2	21.2	21.9
Third Quarter	262	218	210	210	180	185	170	138	150	178	177
<i>% of Total</i>	33.4%	26.9%	27.0%	29.7%	28.3%	27.9%	29.4%	29.5%	28.3	29.1	27.7
Fourth Quarter	217	215	219	186	190	187	158	149	166	183	180
<i>% of Total</i>	27.6%	26.5%	28.1%	26.3%	29.9%	28.2%	27.3%	31.8%	31.3	29.9	28.1
YEAR	785	811	778	707	636	664	578	468	530	612	639

Source: DAFM

Heifers

	2005	2006	2007	2008	2009	2010	2011	2012	2013	2014	2015
First Quarter	89	118	119	115	104	123	110	97	96	112	119
<i>% of Total</i>	24.6%	28.2%	28.0%	27.7%	25.6%	27.7%	26.5%	27.4%	25.5	26.0	28.4
Second Quarter	82	97	96	99	94	111	105	83	92	111	102
<i>% of Total</i>	22.7%	23.2%	22.6%	23.9%	23.2%	25.0%	25.3%	23.4%	24.4	25.8	24.3
Third Quarter	82	93	96	97	99	103	98	83	91	99	94
<i>% of Total</i>	22.7%	22.2%	22.6%	23.4%	24.4%	23.2%	23.6%	23.4%	24.1	23.0	22.4
Fourth Quarter	109	110	114	104	109	107	102	91	98	108	104
<i>% of Total</i>	30.1%	26.3%	26.8%	25.1%	26.8%	24.1%	24.6%	25.7%	26.0	25.1	24.8
YEAR	362	418	425	415	406	444	415	354	377	430	419

Source: DAFM

Cows

	2005	2006	2007	2008	2009	2010	2011	2012	2013	2014	2015
First Quarter	57	76	84	62	64	79	70	70	77	88	79
<i>% of Total</i>	16.7%	21.2%	23.6%	18.8%	19.4%	23.4%	20.8%	21.2%	21.0	24.0	24.4
Second Quarter	84	88	87	80	81	88	94	85	98	95	81
<i>% of Total</i>	24.6%	24.6%	24.4%	24.2%	24.5%	26.1%	27.9%	25.8%	26.7	26.0	25.1
Third Quarter	97	95	90	97	96	86	87	83	99	89	83
<i>% of Total</i>	28.4%	26.5%	25.3%	29.4%	29.1%	25.5%	25.8%	25.2%	27.0	24.3	25.5
Fourth Quarter	104	99	95	91	89	84	86	92	93	94	81
<i>% of Total</i>	30.4%	27.7%	26.7%	27.6%	27.0%	24.9%	25.5%	27.9%	25.3	25.7	25.0
YEAR	342	358	356	330	330	337	337	330	367	366	323

Source: DAFM

Sheep and Sheepmeat

Irish Sheepmeat Balance Sheet, 2005-2016* (f) ('000 tonnes cwe)

	2005	2006	2007	2008	2009	2010	2011	2012	2013	2014	2015 (e)	2016 (f*)
GIP Production	70	68.7	62.4	56.2	52.5	44.0	39.0	45.2	49.8	51.1	50.8	52.7
Net Production (Slaughterings)	75	71.5	66.5	58.7	55.1	47.8	48.1	53.7	57.5	57.6	58.4	62.0
+ Sheepmeat Imports	3	3.0	2.8	3.4	4.7	3.5	3.5	4.0	5.0	4.6	4.8	5.0
- Sheepmeat Exports	58	54.0	48.8	43.8	42.0	35.5	36.5	41.5	47.5	46.3	47.6	51.8
Consumption												
- '000 Tonnes cwe	20.0	20.5	20.5	18.3	17.8	15.8	15.1	16.2	14.9	15.9	15.6	15.2
- Kg/head	4.8	4.8	4.7	4.1	4.0	3.5	3.3	3.5	3.3	3.5	3.4	3.3

Source: CSO/Bord Bia Estimates

*figures are subject to review and 2016 are forecast figures

Irish Sheep Numbers, June 2005 - 2015 ('000 head)

	2005	2006	2007	2008	2009	2010	2011	2012	2013	2014	2015
TOTAL SHEEP	6,392	5,973	5,522	5,061	4,778	4,745	4,830	5,170	5,007	5,097	5,164
Total Breeding Flock	3,455	3,200	2,944	2,696	2,525	2,529	2,509	2,667	2,649	2,591	2,562
Ewes for Breeding	3,558	3,104	2,854	2,614	2,451	2,450	2,435	2,589	2,568	2,514	2,486
Rams	96	96	90	82	74	80	74	78	80	78	76
Other Sheep	2,938	2,773	2,578	2,365	2,253	2,216	2,321	2,503	2,358	2,505	2,602

Source: CSO

Figures may not add up due to rounding

Figures subject to revision as soon as updated figures are made available

Irish Sheep Throughput at Export Meat Plants, 2005-2015 ('000 head)

	2005	2006	2007	2008	2009	2010	2011	2012	2013	2014	2015
TOTAL	3,278	3,148	2,944	2,630	2,419	2,120	2,171	2,431	2,616	2,599	2,629
of which:											
Lambs	2,764	2,693	2,512	2,232	2,036	1,815	1,894	2,120	2,241	2,246	2,313
Cull Ewes	514	456	432	398	383	305	277	311	375	353	315

Source: DAFM

Irish Sheepmeat Exports, 2005-2015* ('000 tonnes cwe)

	2005	2006	2007	2008	2009	2010	2011	2012	2013	2014	2015 (e)
Total	58.0	54.0	48.8	43.8	42.0	35.5	36.5	41.5	47.5	46.3	47.6
of which to:											
France	33.7	31.5	27.5	23.0	22.5	18.0	17.8	18.2	19.0	19.0	16.0
UK	14.0	12.5	12.5	12.3	11.0	9.2	10.8	11.9	11.0	10.3	14.0
Sweden	2.0	2.6	2.1	2.5	1.5	1.5	2.0	2.6	3.6	3.6	3.6
Germany	2.1	2.0	1.7	1.7	1.6	1.6	2.0	2.6	3.5	3.4	3.6
Italy	1.0	1.3	1.1	1.2	2.0	2.0	1.5	1.5	1.8	1.7	1.6
Spain	0.8	0.4	0.2	0.1	0.3	0.3	0.1	0.1	0.0	0.0	0.0
Portugal	1.0	0.8	0.4	0.6	1.0	1.0	0.4	0.1	0.1	0.1	0.1
Other	3.4	2.9	3.3	2.4	2.1	1.9	1.9	4.5	8.5	8.2	8.7

Source: CSO/Bord Bia estimates

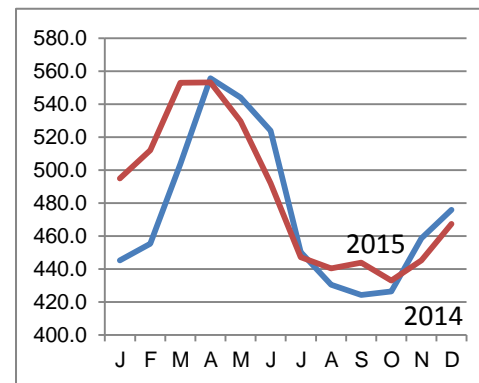
Note: Figures for 2015 are provisional may not add up due to rounding

Irish Lamb Prices by Month, 2005-2015 (c/kg dw excl. VAT)

	2005	2006	2007	2008	2009	2010	2011	2012	2013	2014	2015
	c/kg	c/kg	c/kg	c/kg	c/kg	c/kg	c/kg	c/kg	c/kg	c/kg	c/kg
January	350.9	316.8	334.9	339.6	356.1	434.6	458.0	485.1	403.8	445.1	495.0
February	343.8	322.1	346.7	368.7	379.3	436.5	457.7	495.0	411.8	455.2	512.0
March	353.1	341.5	363.7	393.1	388.4	451.6	498.9	500.5	479.7	503.6	553.0
April	366.2	393.7	391.2	406.6	430.2	485.2	565.4	524.2	509.3	555.7	553.2
May	374.0	408.0	366.8	430.6	450.0	489.5	586.6	485.6	534.3	544.0	529.6
June	372.6	386.7	357.0	413.6	413.1	461.7	505.8	459.7	506.2	523.8	491.9
July	334.9	336.6	340.4	362.4	351.9	406.8	447.7	452.8	489.7	450.2	447.1
August	315.6	326.0	359.9	345.5	345.0	419.9	441.3	456.7	450.9	430.5	440.4
September	306.0	325.4	366.7	346.2	337.3	402.5	428.2	438.6	421.1	424.2	443.9
October	303.8	329.1	346.0	332.4	325.7	400.9	429.3	421.2	417.2	426.3	432.9
November	314.2	327.5	333.4	329.6	345.7	421.2	451.0	413.3	423.2	458.6	445.3
December	324.4	330.8	334.9	329.2	377.2	461.8	469.0	406.6	441.6	475.8	467.3
YEAR	338.3	345.3	353.5	366.5	375.0	439.4	478.2	461.6	457.4	474.4	484.3

Source: DAFM

Lamb Prices, 2015 V's 2014
(c/kg dw excl VAT)



Quarterly Sheep Slaughtering at Meat Export Premises 2005 - 2015 ('000 head)

Lambs

	2005	2006	2007	2008	2009	2010	2011	2012	2013	2014	2015
First Quarter	551	476	428	432	427	349	323	375	508	446	464
% of Total	19.9%	17.7%	17.0%	19.6%	20.7%	19.2%	17.1%	17.7%	22.7%	19.9%	20.1%
Second Quarter	729	740	625	541	473	383	445	498	466	538	535
% of Total	26.4%	27.5%	24.9%	24.6%	22.9%	21.1%	23.5%	23.5%	20.8%	24.0%	23.1%
Third Quarter	755	810	815	622	586	554	571	637	650	683	705
% of Total	27.3%	30.1%	32.4%	28.3%	28.4%	30.5%	30.1%	30.0%	29.0%	30.4%	30.5%
Fourth Quarter	730	667	644	606	581	529	555	610	615	579	609
% of Total	26.4%	24.8%	25.6%	27.5%	28.1%	29.1%	29.3%	28.8%	27.5%	25.8%	26.3%
YEAR	2,765	2,693	2,512	2,201	2,067	1,815	1,894	2,120	2,239	2,246	2,313

Source: DAFM

Cull Ewes

	2005	2006	2007	2008	2009	2010	2011	2012	2013	2014	2015
First Quarter	116	91	84	78	73	56	51	51	78	71	58
% of Total	22.5%	20.0%	19.4%	19.8%	18.8%	18.4%	18.4%	16.4%	20.8%	20.1%	18.3%
Second Quarter	109	104	94	89	92	71	64	53	73	77	65
% of Total	21.2%	22.9%	21.7%	22.6%	23.7%	23.3%	23.1%	17.0%	19.5%	21.8%	20.6%
Third Quarter	150	142	136	125	130	97	84	102	116	121	100
% of Total	29.1%	31.2%	31.4%	31.7%	33.5%	31.8%	30.3%	32.8%	30.9%	34.3%	31.9%
Fourth Quarter	140	118	119	102	93	81	78	105	108	84	92
% of Total	27.2%	25.9%	27.5%	25.9%	24.0%	26.6%	28.2%	33.8%	28.8%	23.8%	29.3%
YEAR	515	455	433	394	388	305	277	311	375	353	315

Source: DAFM

Pigs and Pigmeat

Irish Pigmeat Balance Sheet, 2005-2015 ('000 tonnes cwe)

	2005	2006	2007	2008	2009*	2010	2011	2012	2013	2014	2015* (e)	2016* (f)
GIP Production	242	240	242	235	242	269	288	281	275	296	314	310
Net Production (Slaughterings)	206	209	205	202	196	214	234	241	239	254	276	290
+ Pigmeat Imports	59	65	72	77	70	71	78	81	99	107	100	97
- Pigmeat Exports	129	139	142	138	137	147	168	180	193	210	229	240
Consumption												
- '000 Tonnes cwe	137	135	136	141	129	138	144	142	145	151	147	147
- Kg/head	33.1	31.9	31.0	31.4	28.5	30.3	31.5	31.0	31.6	32.8	32.4	30.9

* 2009 figures are estimates prior to product recall in December

Source: CSO/Bord Bia Estimates

**figures are subject to review and 2016 are forecast figures

Irish Pig Numbers, June 2004-2015 ('000 head)

	2005	2006	2007	2008	2009	2010	2011	2012	2013	2014	2015
Total Pigs	1,688	1,643	1,588	1,467	1,385	1,516	1,549	1,571	1,552	1,555	1,537
of which:											
Breeding Pigs	174	170	167	157	149	161	156	146	148	152	149
- Gilts in pig	19	22	21	24	19	19	19	20	19	20	19
- Sows in pig	100	97	98	91	87	94	91	85	84	83	86
- Other sows	32	30	30	24	23	32	30	25	28	32	28
- Gilts not yet served	20	19	16	16	18	14	15	15	15	16	15
- Boars	3	2	2	2	2	2	1	1	1	1	1
Fattening Pigs	1,514	1,474	1,422	1,310	1,236	1,355	1,393	1,425	1,405	1,404	1,388
- 80 kg and over	156	214	200	234	218	253	250	246	252	259	
- 50kg and under 80kg	380	370	331	310	284	294	296	316	304	307	
- 20kg and under 50kg	469	454	442	378	363	414	426	419	400	396	
- Less than 20kg	509	436	450	387	371	394	421	444	449	441	446

Source: CSO (figures may not add up due to rounding)

Figures subject to revision as soon as updated figures are made available

Irish Pig Throughput at Export Meat Plants, 2005-2015 ('000 head)

	2005	2006	2007	2008	2009	2010	2011	2012	2013	2014	2015
Total Pigs	2,618	2,619	2,568	2,501	2,363	2,602	2,847	2,903	2,823	2,969	3,192

Source: DAFM

Northern Ireland Pig Supplies, 2005-2015 ('000 head)

	2005	2006	2007	2008	2009	2010	2011	2012	2013	2014	2015
Total Pigs	1,288	1,171	1,301	1,315	1,355	1,543	1,598	1,618	1,583	1,585	1,669

Source: DEFRA

Irish Pigmeat Exports, 2005 - 2015 ('000 tonnes cwe)

000 tonnes cwe	2005	2006	2007	2008	2009	2010	2011	2012	2013	2014	2014	2015 (e)
Total	129	139	142	138	127	150	181	197	193	207	210	229
of which to:												
UK	71	76	80	78	80	74	78	88	87	84	86	90
Cont. EU	33	35	38	37	37	41	46	45	38	43	46	57
- Germany	13	11	10	10	11	12	12	15	15	13	13	17
- France	4	7	7	6	6	6	5	3	2	2	3	4
- Italy	4	3	7	4	4	5	4	2	2	3	2	3
- Other EU	12	14	14	17	16	17	25	24	19	25	28	33
Int. Mkts	25	28	24	23	10	35	57	64	69	80	78	82
- Japan	12	12	7	5	1	7	11	5	3	12	12	4
- USA	4	3	2	1	2	4	5	4	4	7	7	7
- Russia	2	6	7	7	0	7	16	16	25	2	2	0
China				5	0	2	23	29	29	34	31	45
- Other non-EU	7	7	8	5	7	14	2	10	7	25	26	26

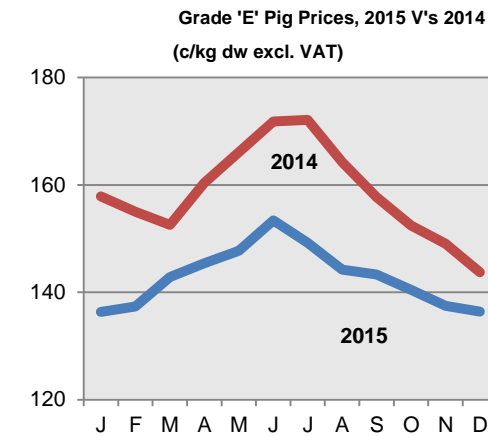
Source: Bord Bia estimates

Note: Figures for 2015 are subject to review may not add up due to rounding while 2016 figures are forecast

Irish Grade 'E' Pig Prices, 2005-2015 (c/kg dw excl. VAT)

	2005 c/kg	2006 c/kg	2007 c/kg	2008 c/kg	2009 c/kg	2010 c/kg	2011 c/kg	2012 c/kg	2013 c/kg	2014 c/kg	2015 c/kg
January	126.7	130.6	134.8	130.6	131	118.1	130.1	145.8	169.0	157.9	136.4
February	128.9	129.8	133	130.7	128.4	121.9	133.6	146.0	168.3	155.0	137.4
March	131.7	132.1	132.7	132.8	131	122.8	136.7	147.5	168.3	152.6	142.9
April	127.4	135.1	128.6	138.8	132.2	124.6	140.1	150.1	166.0	160.4	145.4
May	124.2	136.1	128.7	142.2	140.8	129.2	144.6	153.8	161.7	166.1	147.7
June	129.0	141.9	129.1	149.6	143.5	137.4	146.8	155.9	160.9	171.8	153.4
July	134.3	144.9	128.5	153.5	140.2	141.2	147.2	156.0	161.5	172.2	149.2
August	132.4	146	131.6	161	134.8	140.4	147.5	159.1	162.1	164.2	144.3
September	134.3	149	137.4	158.9	130.9	138.4	147.7	166.9	166.6	157.8	143.4
October	134.5	150.4	138.3	152.9	125.6	133.0	146.5	170.0	173.0	152.5	140.5
November	132.8	143.6	135.7	143.5	120.7	130.0	146.1	170.4	171.0	149.1	137.5
December	133.2	141	133.3	137.7	120.4	130.1	146.1	171.4	165.9	143.8	136.4
YEAR	130.8	140.0	132.6	144.4	131.6	130.6	142.7	157.7	166.2	158.6	142.9

Source: DAFM



Quarterly Pig Slaughtering at Meat Export Premises 2005 - 2015 ('000 head)

Total Pigs

	2005	2006	2007	2008	2009	2010	2011	2011	2012	2012	2013	2014	2015
First Quarter	663	652	671	644	600	618	686	686	734	734	724	722	777
<i>% of Total</i>	25.3%	24.9%	26.1%	25.7%	25.4%	23.8%	24.1%	24.1%	25.3%	25.3%	25.6%	24.3%	24.3%
Second Quarter	603	656	635	635	575	638	691	691	725	726	716	723	774
<i>% of Total</i>	23.0%	25.0%	24.7%	25.4%	24.3%	24.5%	24.3%	24.3%	25.0%	25.0%	25.4%	24.4%	24.2%
Third Quarter	695	670	638	623	630.0	674.0	734	734	724	725	696	751	791
<i>% of Total</i>	26.5%	25.6%	24.8%	24.9%	26.7%	25.9%	25.8%	25.8%	24.9%	24.9%	24.7%	25.3%	24.8%
Fourth Quarter	657	641	624	599	558.0	672.0	736	736	720	721	687	773	850
<i>% of Total</i>	25.1%	24.5%	24.3%	24.0%	23.6%	25.8%	25.9%	25.9%	24.8%	24.8%	24.3%	26.0%	26.6%
YEAR	2,618	2,619	2,568	2,501	2,363	2,602	2,847	2,847	2,903	2,906	2,823	2,969	3,192

Source: DAFM