

# Meat and Livestock

Review & Outlook 2010/11

Growing the success of Irish food & horticulture

*Bord Bia*  
Irish Food Board



## Contents

Summary.....	3
Cattle and Beef.....	5
Cattle disposals higher .....	6
Export meat plant supplies up by almost 8% .....	7
Carcase weights increase .....	7
Live cattle exports 19% higher .....	10
Cattle Prices .....	11
Markets for Irish beef .....	12
Outlook for 2011.....	13
Pigs and Pigmeat .....	17
Disposals increase by eleven per cent .....	17
Irish pig prices largely unchanged.....	19
Markets for Irish pigmeat .....	21
Outlook for 2011.....	21
Sheep and sheepmeat.....	23
Disposals.....	23
Lamb Prices.....	25
Sheepmeat Exports.....	25
Outlook for 2011.....	27
Statistical Appendix.....	28

## Summary

### Review of 2010

#### Irish Meat & Livestock Exports

Species	2009 €m	2010(e) €m	2010/2009 % +/-
Beef	1,397	1,510	+8
Pigmeat	289	317	+10
Poultry	183	200	+9
Sheepmeat	164	170	+4
Live Animals	213	245	+15
<b>TOTAL</b>	<b>2,247</b>	<b>2,442</b>	<b>+9</b>

- The **combined value of meat and livestock exports grew by an estimated 9% to almost €2.44 billion in 2010**. The main growth drivers were increased export revenues for beef, live animals and pigmeat.
- An increase of almost 8% in cattle supplies coupled with a 1% rise in cattle prices helped increase the value of beef exported by 8%, or more than €110m in 2010 as increased export volumes and stable prices helped trade. For the year, beef exports were valued at €1.51 billion.
- A rise of almost 10% in pigmeat export volumes coupled with largely unchanged average prices led to the value of exports rising by 10% to €317m.
- Poultry exports were boosted by higher average prices for fresh/chilled products while volumes also increased as the year progressed. This resulted in the value of exports rising by an estimated 9% to €200m.
- The value of sheepmeat exports increased by 4% to reach an estimated €170m. A drop of 14% in sheep supplies was more than offset by a strong price increase, which saw lamb prices jump by 17%.
- The strength of live cattle and pig exports boosted the value of livestock exports, with a rise of 15% recorded at €245m.

## **Prospects for 2011**

- The prospects for the meat & livestock sector in 2011 remain reasonably positive with a tight supply situation both in Ireland and across Europe expected to boost the value of beef exports. Total finished cattle supplies at export meat plant are expected to fall by more than 100,000 head. Sheep supplies are expected to fall by around 2% which should help maintain the value of sheepmeat exports. While some modest increase in pig supplies should occur in early 2011. The rise in volumes reflects the return of herds depopulated following the removal of 10,000 sows in the aftermath of the product recall in late 2008. However, feed price developments will play a critical role in both the pigmeat and poultry sectors as the year progresses.

## **Cattle and Beef**

Following difficult trading conditions due to weak market demand for much of 2009 and early 2010, particularly for higher value cuts, the European beef market stabilised during the course of 2010. A combination of tighter availability, a more positive currency situation and increased demand for European beef from markets such as Russia and Turkey helped trade.

The prospects for 2011 point to the relatively tight supply situation continuing across Europe while Irish finished cattle supplies are also set to tighten considerably.

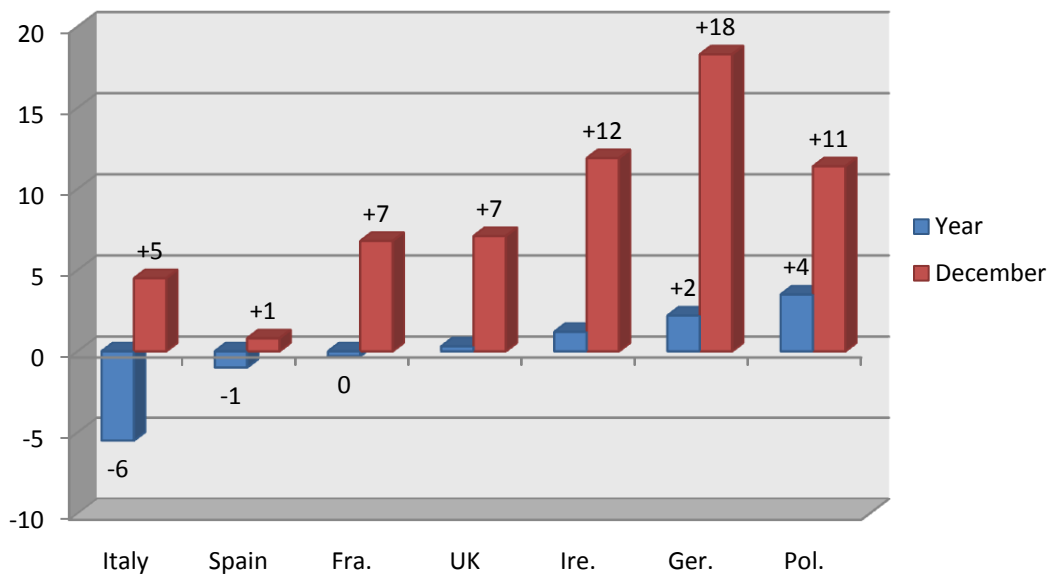
Household purchase data from the UK shows that for the quarter ending the 31<sup>st</sup> October, the volume of beef purchased by UK households rose by more than 2%. Figures for France show a recovery of more than 3% in retail beef sales as the year progressed.

Consumer decisions will be closely related to economic developments and with most of our main European markets forecasting some recovery in 2011, there is reason to expect some improvement in beef consumption.

Mixed trends were evident in beef production across the EU in 2010 with a fall of less than 1% anticipated in total EU output. Some fall was evident in fresh/frozen imports during 2010 with shipments estimated to have dropped by around 10%. This leaves imports a third below the levels recorded as recently as 2007.

Cattle prices across Europe were sluggish for much of 2010 as consumers continued their search for value. The weighted EU-15 R3 male cattle price was virtually unchanged at €3.16/kg. However, some recovery was evident in the second half of the year, in particular December when prices were 8% higher than corresponding 2009 levels with the largest rise evident in Germany.

### European cattle price trends (% change)\*



Source: EU Commission

\*All prices refer to R3 young bulls with exception of Ireland and UK which refer to R3 steer

### ***Cattle disposals higher***

Total cattle disposals in 2010 were almost 9% higher than previous year levels at just 2.1 million head. This reflected significant carryover of stock into 2010, combined with strong live exports throughout the year. The key trends in disposals during 2010 were as follows:

- Exports meat plant supplies increasing by 8%.
- Live exports 19% higher

### **Irish cattle disposals, 2010 vs. 2009 ('000 head)**

	2009	2010 (e)	% Ch
Export meat plants	1,525	1,643	+7.7
Live exports	286	339	+18.5
Local abattoirs	75	72	-4.0
<b>Total</b>	<b>1,886</b>	<b>2,054</b>	<b>+8.9</b>

Source: Bord Bia

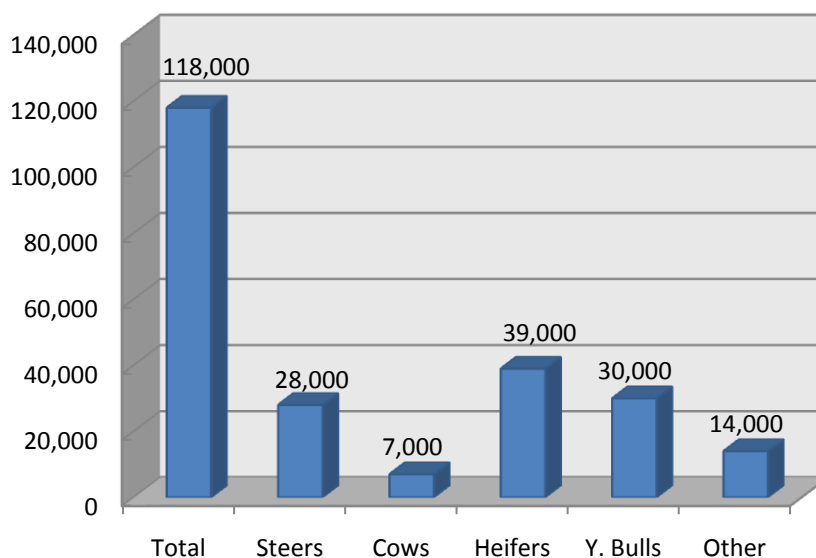
### ***Export meat plant supplies up by almost 8%***

Cattle throughput at meat export plants increased by almost 8% to 1.64 million head. Prime cattle supplies increased by more than 8% to 1.26 million head, reflecting a strong carryover of supplies into 2010 from the previous year. For the first half of the year, throughput of prime cattle was higher by 75,900 head, there was a further increase of 19,700 head in throughput in the second half.

In terms of the different categories of cattle, the steer category was four per cent higher a year earlier at 663,500 head. The majority of this increase was due to calf registrations increasing by 4% in 2008 and a decline in live exports of 60,000 head in the same year.

Supplies of heifers were more than nine per cent higher at 443,900. Young bull throughput was up by a quarter to 149,700 head as increasing numbers of producers finish young bulls.

### **Irish export meat plant supplies, 2010 vs. 2009 (head)**



Source: Department of Agriculture, Fisheries and Food

### ***Carcase weights increase***

There was some change in carcass weights across some of the categories during 2010 as better grazing conditions boosted thrive for much of the year.

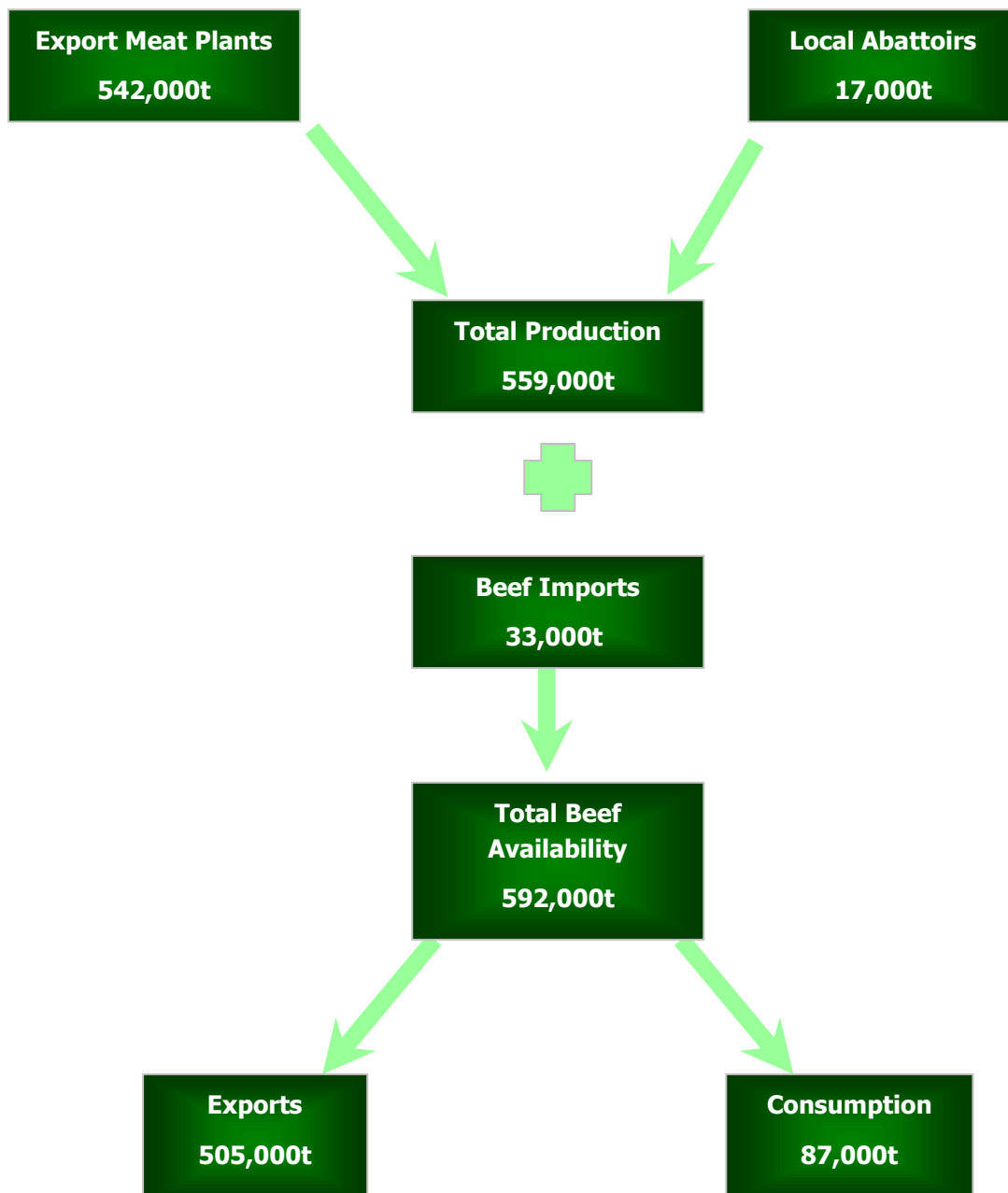
Average heifer carcass weights increased by more than 5 kg to 294kg while cows rose by 11kg to 309kg. However, young bull and steer carcass weights fell by 2kg and 1kg to 358kg and 356 kg respectively.

**Average Carcass weights at meat export plants(kg)**

	2009	2010	% Ch
Steers	357	356	-0.3
Heifers	289	294	+1.7
Cows	298	309	+3.7
Young Bull	360	358	-0.5

Source: Department of Agriculture, Fisheries and Food

### Distribution of Irish Beef Production, 2010(e) – Tonnes cwe



Source: Bord Bia estimates

### ***Live cattle exports 19% higher***

Live cattle exports reached an estimated 339,000 head in 2010, which was almost 19% above the level recorded in 2009. The value of this trade increased by 16% to €183 million. The principal factors driving increased exports during the year were, stronger demand for Irish calves in the Benelux region, strengthening feedlot demand in Spain and Italy and some further rise in the level of finished cattle exports to Northern Ireland.

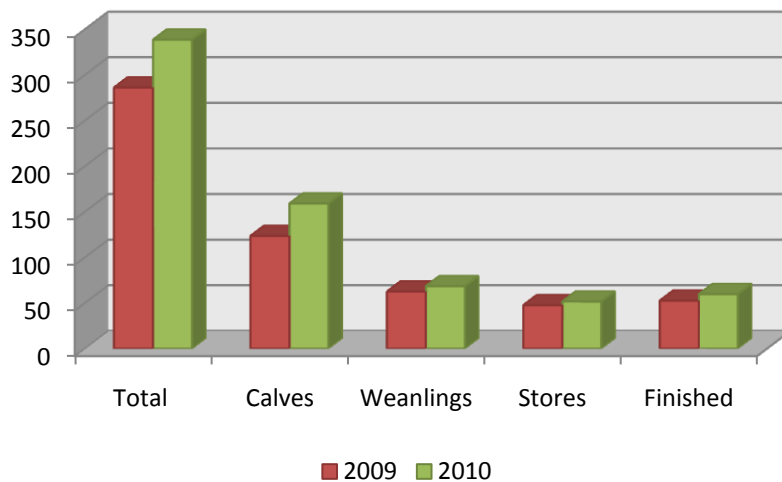
Calf supplies on the Dutch market from Germany and France remained tight, combined with the continued absence of UK calves due to TB issues led to demand for Irish dairy calves on the Dutch market been strong throughout the year, albeit slightly back on last year levels. Additionally, there was a strong lift in the number of calves going to the Belgian market, with numbers up 80% to 33,300 head, although reportedly large quantities of the Belgian calf market are destined for neighboring markets.

The Spanish market continues to strengthen, with calves continuing to account for more than half of total shipments to the market. For the year, calf exports are estimated to have increased by 29% to around 159,000 head with the Netherlands taking 39% of the total.

Exports of weanlings and store cattle also performed strongly, rising by 9% to 120,000 head. Shipments to Italy increased by 26% to 70,600 head despite a recovery in the volume of French cattle on the market. Shipments of weanlings and stores to Spain were largely unchanged from 2009 levels at 24,300 head.

Exports to the UK Increased by around 14,000 head to reach 103,500 head for the year with around 95,000 of the total destined for Northern Ireland. Exports of finished cattle to Northern Ireland rose by 7,700 head to 54,200 head, while shipments of finished cattle to Great Britain were maintained at 4,000 head.

### Irish live cattle exports, 2010 vs. 2009 ('000 head)

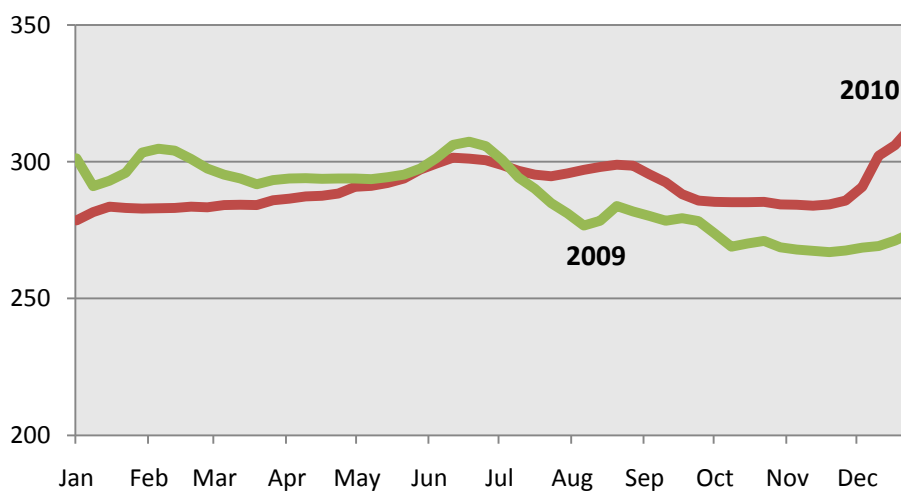


Source: Dept. of Agriculture, Fisheries & Food

### Cattle Prices

Average prices across all categories of cattle increased slightly in 2010, reflecting a stronger finish to the year in response to better market and across Europe and international markets combined with some tightening of domestic supplies. Steer prices were 1% higher at €2.91 kg dw excl. VAT. The highest prices were recorded in December, with prices 11% of a year earlier at €3.11 kg dw excl. VAT.

### Irish R3 steer prices, 2010 Vs 2009 (c/kg dw excl VAT)



Source: Dept. of Agriculture, Fisheries & Food

R3 heifer price trends were similar, with prices for the year as a whole increasing by 2% to €2.99 /kg dw excl. VAT.

Cow prices showed the greatest increase, reflecting stronger manufacturing beef demand across the UK and in Russia in particular. Cow prices for the year were 3% higher at €2.42/kg excl. VAT, with prices in the last quarter showing significant improvement on prior year levels, as prices rose by almost 13% to €2.41/kg excl. VAT.

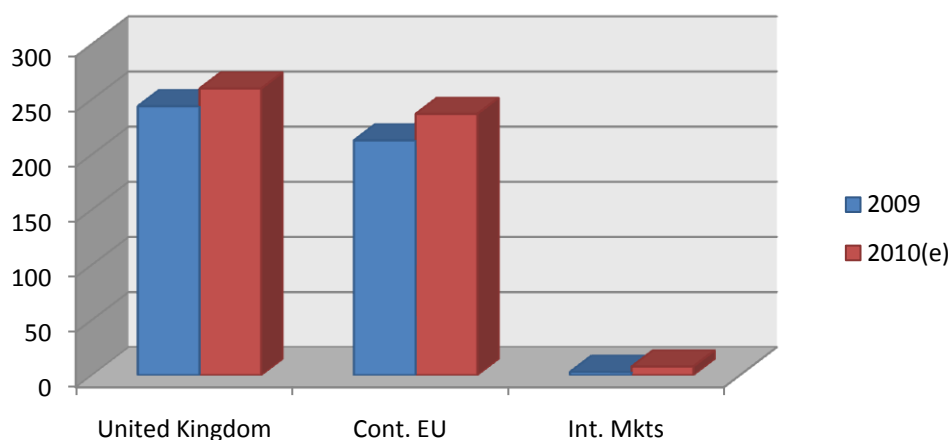
### ***Markets for Irish beef***

Higher finished cattle availability, recovering retail sales and a better currency situation helped shipments of Irish beef to the **United Kingdom** during 2010. Export volumes increased by almost 7% to reach 260,000 tonnes and were valued at some €685 million. This represents a rise of more than €25 million in the value of exports.

Export volumes to **Continental EU markets** increased by 12% during 2010 to reach 237,000 tonnes with trade valued at €820 million. Trade was helped by stronger availability and improving market demand as the year progressed. Shipments were boosted by increasing exports from other EU suppliers to Russia and Turkey. The strongest growth in exports was evident in France, Italy and the Netherlands.

Having started the year at very slow levels, exports of Irish beef to **International markets** picked up considerably during the latter part of 2010, helped largely by increased demand from Russia as other EU suppliers diverted increasing volumes to Turkey. For the year, it is estimated that exports reached around 8,000 tonnes.

## Market Distribution of Irish beef ('000 tonnes cwe)



Source: Bord Bia estimates

## Outlook for 2011

The prospects for 2011 point to a relatively tight supply situation across Europe while Irish finished cattle supplies are set to tighten considerably. This combined with the strong rise in cattle price among leading global exporters and a more stable consumer demand all suggest a stronger market environment for Irish beef.

EU-15 beef production is to fall by around 2% to 7.1 million tonnes. Most of the decline in output is expected amongst the key principal suppliers, namely France, Germany and the UK. In addition, a number of Member States expect a stronger trade to International markets. German exports to international markets are forecast to double to 38,000 tonnes while Spain and Italy are also expected to record higher shipments outside of Europe. This will impact on availability within Europe, particularly for forequarter beef.

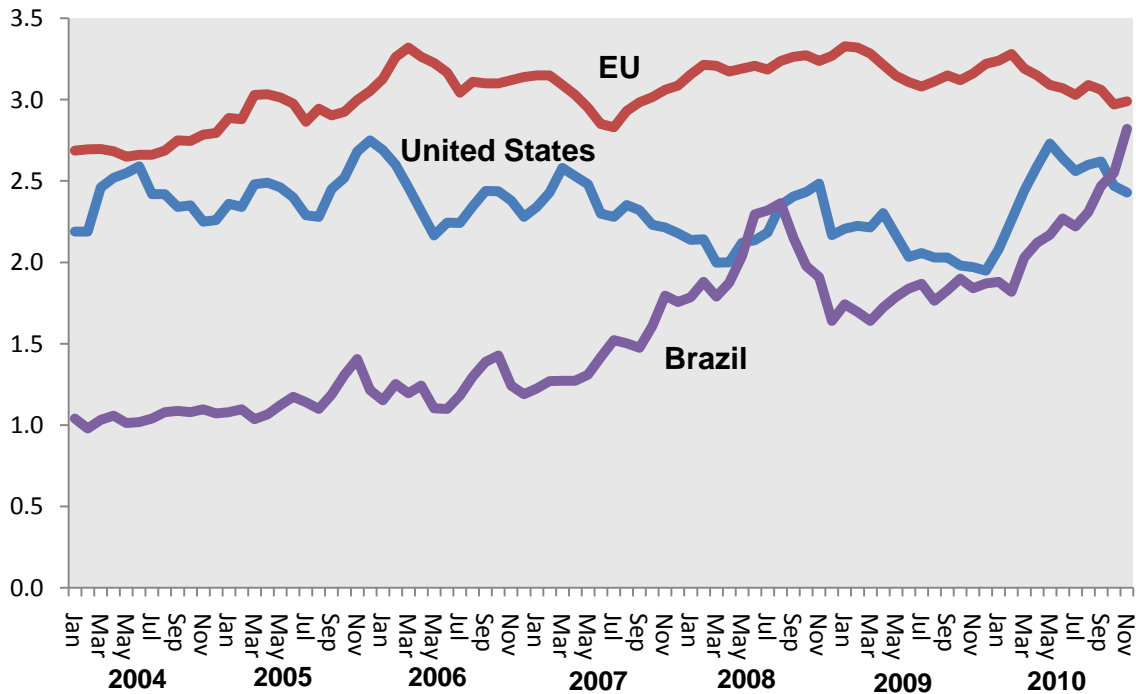
South American export availability in 2011 looks set to remain constrained by the ongoing decline in shipments from Argentina, which fell by an estimated 50% in 2010. In 2011, it is expected that the combined exports of Brazil, Argentina and Uruguay - which between them accounted for almost 85% of EU imports in 2009 - will be around 500,000 tonnes below 2007 levels at 2.9 million tonnes. Despite Brazilian

exports rising by around 5% in 2010, shipments to the EU were unchanged with all of the growth taking place in the Middle East and to a lesser extent Asia.

Imports of fresh and frozen beef from Brazil into the EU continue to run at just over one fifth of 2007 levels. The number of Brazilian farms approved to supply the EU has been slow to increase and in December 2010 stood at just over 2,200. While some further recovery is expected in Brazilian beef exports in 2010, volumes shipped to Europe are unlikely to increase strongly, unless EU prices strengthen considerably.

During 2010 there was a considerable convergence evident in world and EU cattle prices reflecting tight global supplies and an improved demand in key import regions such as the Middle East and Asia. By December 2010 Brazilian steer prices stood at almost 95% of the EU-15 average male cattle price, which compared to just 60% at the start of 2010. This greatly reduces the relative competitiveness of Brazilian beef on the European market.

**World Male Cattle Prices, 2004 to 2010 (c/kg dw)**

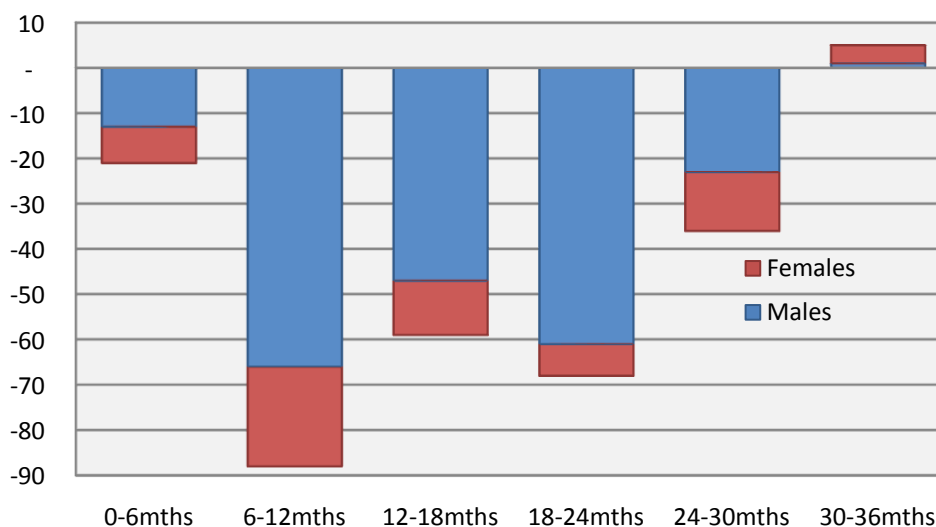


A significant tightening in Irish finished cattle supplies is anticipated for the 2011 – 2012 period as the strength of live cattle exports over recent year’s impacts on

availability. Figures from the Department of Agriculture, Fisheries and Food's AIM database for the 1<sup>st</sup> October 2010 confirm the decline in younger cattle numbers with a drop of 267,000 recorded in the number of cattle less than 36 months. Some 236,000 of this is evident in animals less than 24 months of age.

### Trends in Irish cattle numbers by age, October 1<sup>st</sup> 2010

(Change in '000 head on October 2009)



Source: Dept of Agriculture, Fisheries and Food.

The figures for 24 – 36 month old animals showed a fall of 22,000 in male cattle with females 9,000 head lower than October 2009. With steer and older bull disposals 3,000 head higher during the October to December period and heifer supplies marginally back at 108,000 head, it would suggest the tightening in finished cattle availability is likely in early 2011.

With live exports of finished cattle likely to be largely maintained in 2011, and assuming stable cow disposals, total finished cattle supplies at export meat plant are expected to fall by more than 100,000 head.

The outlook for Irish live cattle exports remains broadly positive for 2011 with demand from key markets such as the Netherlands, Italy and Spain set to be maintained.

The veal market has held up well considering the economic downturn evident across Europe, although the rising price of milk replacer may impact on supplies as 2011 progresses. However, supplies from other key suppliers such as France, Germany and to a lesser extent Poland are unlikely to increase, which should help Irish export levels. Much will depend on price levels both in Ireland and key markets.

In terms of the trade for weanlings and stores, feed costs are likely to play a key role in determining demand levels in markets such as Italy and Spain.

In terms of the UK, and particularly Northern Ireland, an ongoing strong trade for both finished cattle and weanling/stores is anticipated given the relative tightness in NI supplies anticipated over the course of 2011.

## Pigs and Pigmeat

### ***Disposals increase by eleven per cent***

Total pig disposals in the Republic of Ireland during 2010 are estimated to have increased by almost 11% to 3.2 million head. This increase reflects an increase of 10% in export meat plant throughput coupled with a 16% increase in live exports of finished pigs to Northern Ireland.

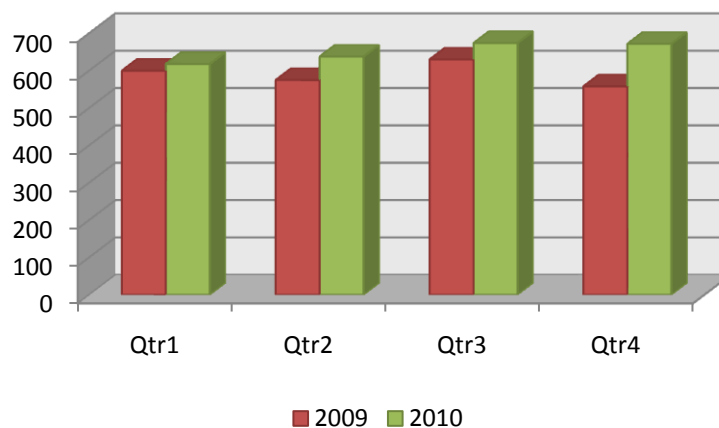
### **Irish pig disposals, 2010 vs. 2009 ('000 head)**

	2009	2010 (e)	% Ch
Export meat plants	2,363	2,602	+10.1
Live exports of finished pigs to NI	482	559	+15.9
Local abattoirs	58	56	-3.5
<b>Total</b>	<b>2,903</b>	<b>3,217</b>	<b>+10.8</b>

Source: Bord Bia, DAFF, CSO

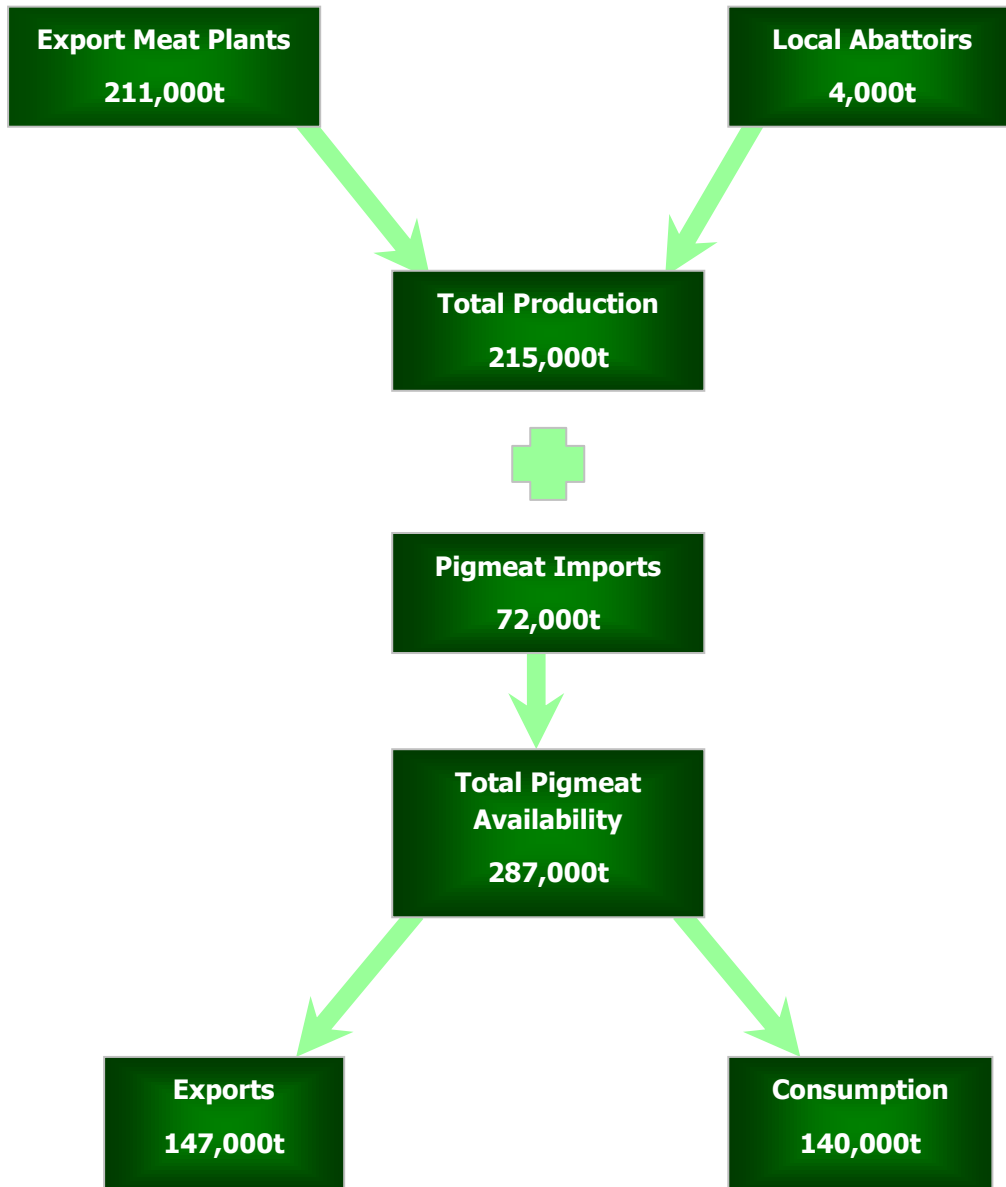
Finished pig supplies at export meat plants stood at 2.52 million head, almost 10% higher than 2009 levels, reflecting some marginal increase in the breeding herd. Sow and boar disposals for the year at export meat plants reached 82,200 head, almost seven per cent above year earlier levels.

### **Quarterly finished pig supplies, 2010 vs. 2009 ('000 head)**



Source: Dept of Agriculture, Fisheries and Food.

**Distribution of Irish pigmeat production, 2010 (e) – Tonnes cwe**



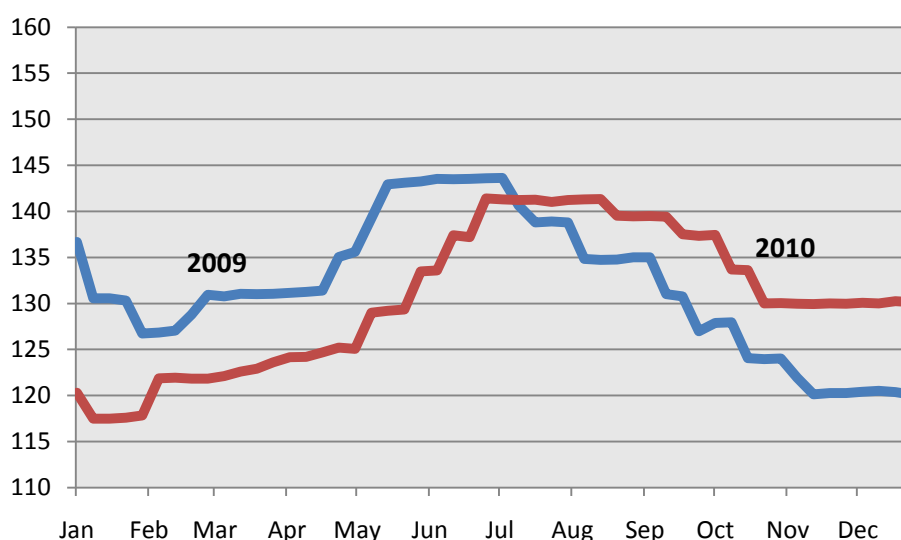
Source: Bord Bia Estimates

### ***Irish pig prices largely unchanged***

Irish pig prices showed little change in 2010 to average €1.31/kg. Following a slow start to the year, Irish pig prices moved ahead of year earlier levels from mid year and for the year as a whole were largely unchanged. Prices in December were running around 8% ahead of the corresponding month in 2009.

Despite EU production been stable last year, slightly weaker demand on Continental and International markets affected trade. This combined with the Euro remaining weak against Sterling continues to hamper trade, when compared to 2007 exchange rate levels, the value of the Euro was 21% lower at €1.16 last year. For the second consecutive year, Irish prices remain at 93% of the EU average price.

### **Irish Grade 'E' Pig Prices, 2010 vs. 2009 (c/kg dw excl. VAT)**



Source: Dept of Agriculture, Fisheries and Food.

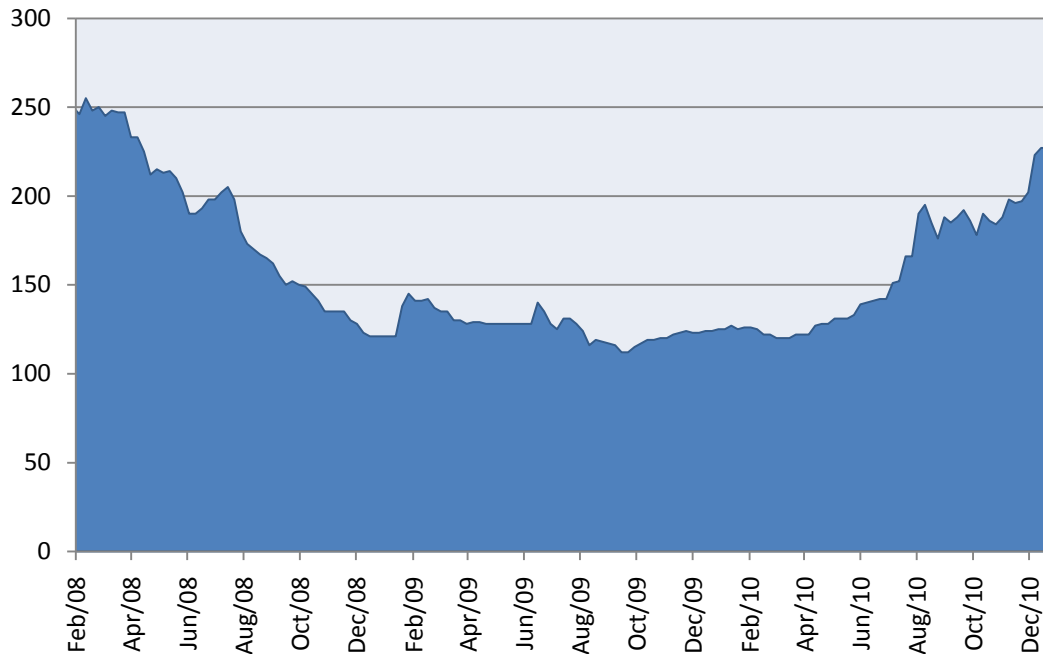
European pigmeat output was stable in 2010 with GIP production standing at 255 million head. However, a sluggish European demand led to average EU pig prices falling by around 2%.

European exports are estimated to have increased by around 14% in 2010 reaching 2.7 million tonnes. All major destinations showed higher shipments with Russia, Japan and China showing the strongest increases.

The dramatic increase in feed costs as the year progressed is significantly adding to production costs, particularly in Ireland where feed tends to represent a higher

proportion of total costs. In early December feed wheat costs across Europe were running around 65% or €80 per tonne ahead of the same period in 2009. With little softening on feed costs expected over the coming months, lower EU output is likely as 2011 progresses.

### Feed Wheat Prices (Hamburg, €/t)



Source: HGCA

Given the prevailing market environment, Irish pigmeat exports performed reasonably well throughout 2010. An increase of almost 10% in pig supplies at export meat plant as depopulated herds returned to full production helped boost export volumes to 147,000 tonnes cwe (134,000 tonnes pw).

Overall, the international market environment for Irish pigmeat improved in 2010 following a difficult trading year in 2009. Improved domestic demand in major importing nations such as Russia, China and Japan, a weakening of the Euro versus the US dollar combined with more expensive North American product led to European exports being more competitive on International markets.

The combination of stronger supplies and reasonably stable prices led to the **value of Irish pigmeat exports in 2010 rising by 10% to an estimated €317 million.**

## ***Markets for Irish pigmeat***

Exports to the **United Kingdom** were affected by a drop of around 3% in UK imports, stronger supplies of competitively priced Dutch pigmeat on the market and a stronger focus by Irish exporters on International markets.

For the year, it is estimated that exports to the UK fell by around 10% to an estimated 65,000 tonnes product weight with trade worth some €205 million. The UK market accounts for just over half of total exports in volume terms and given the relative value of exports, around two thirds of total value.

There was a marginal increase in shipments to the **Continent** with an estimated 38,000 tonnes product weight exported at a value of €65 million. Lower shipments to Germany and France were largely offset by stronger demand from Northern European markets and Eastern Europe, namely the Czech Republic, Poland and Estonia.

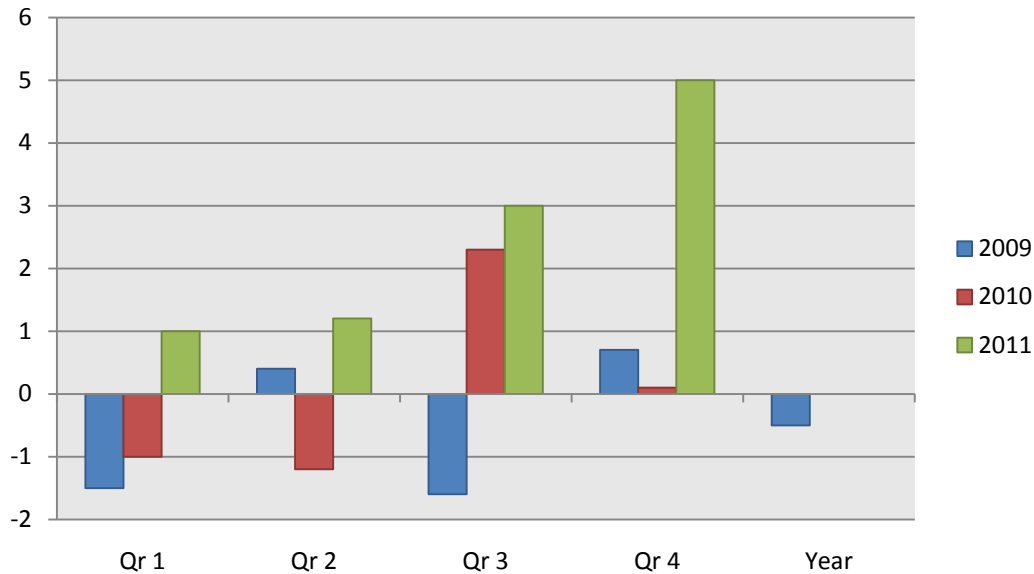
Irish exports to **International markets** performed strongly in 2010 following suspensions on Irish pigmeat exports during the product recall in later 2008. Exports to Russia are estimated to have reached 7,000 tonnes while China accounted for a further 4,000 tonnes. This combined with some recovery in exports to Japan led to exports increasing by around 17,000 tonnes to reach 27,000 tonnes pw. The trade was valued at an estimated €50 million.

## **Outlook for 2011**

The output from the October 2010 EU pigmeat working group point to a rise of around 1% in pig supplies during the first half of 2011. Stronger output anticipated in Germany, Poland, the Netherlands and Italy is expected to more than offset declines in countries such as Denmark, France and the UK.

Developments for the second half of 2011 are likely to be increasingly driven by feed prices and trends in finished pig prices. Given the global grain supply situation anticipated over the coming season, high market prices will be needed if production is to remain viable.

### Quarterly finished pig supplies, EU25/27 (% Change on previous year)



Source: EU Pig Forecasting Working Group

Global pig production is forecast to increase by 3% in 2011, with growth forecast in China, Russia, Brazil and the US.

International demand for European pigmeat is expected to remain reasonable, although other exporters are forecast to remain competitive in key markets. Global export supplies of pigmeat are expected to show little change, although varied trends are anticipated. Stronger US and Brazilian exports are forecast with Asia likely to be the main focus. In terms of import demand, higher volumes are anticipated in South Korea, China and Japan. The Russian market, despite a continued drive to become self sufficient is expected to import similar volumes to 2010 levels.

In Ireland, some further modest increase in pig supplies is anticipated for early 2011. Thereafter, producer decisions in response to rising feed costs will dictate production levels.

## Sheep and sheepmeat

### Disposals

Total sheep disposals fell by more than 13% in 2010 to 2.45 million head. A fall of almost 14% in export meat supplies was the principal reason for the decline, combined with a slowdown in live exports due to tighter supplies. However, disposals at local abattoirs were three per cent higher at 283,000 head.

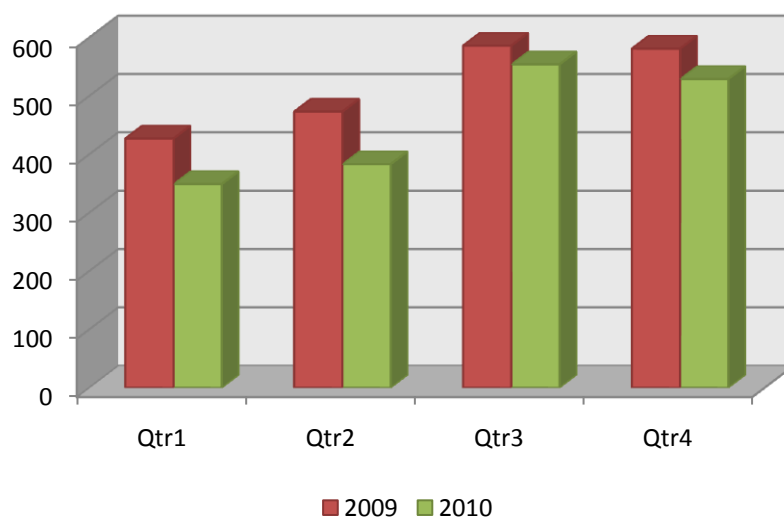
### Irish sheep disposals, 2010 vs. 2009 ('000 head)

	2009	2010 (e)	% Ch
Export Meat Plants	2,455	2,120	- 13.6
Live Exports	97	47	-51.5
Local Abattoirs	274	283	+3.3
<b>Total</b>	<b>2,826</b>	<b>2,450</b>	<b>-13.3</b>

Source: Bord Bia

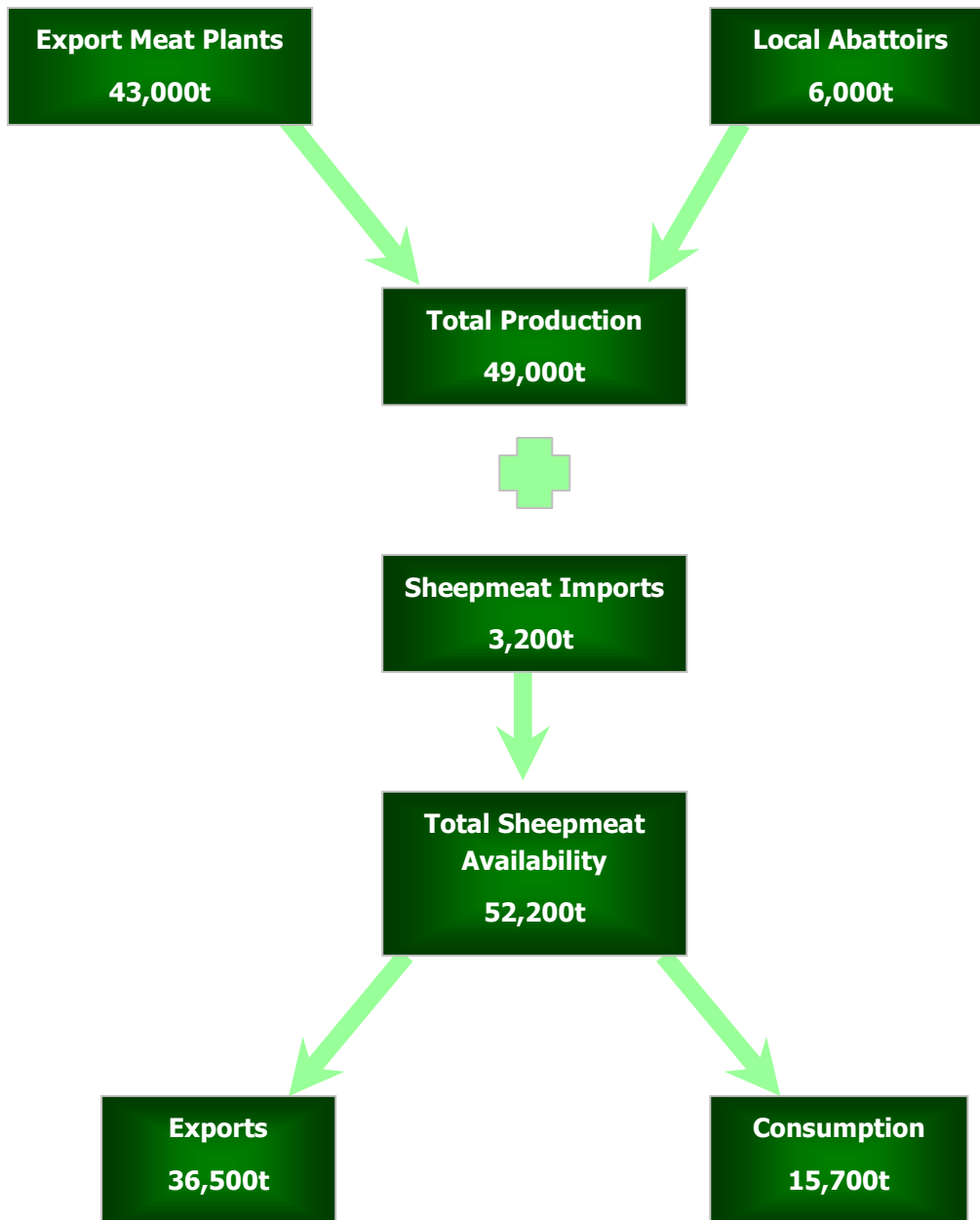
Lamb supplies at export meat plants were 12% lower than last year at approximately 1.8 million head, reflecting a smaller carryover of hoggets in early 2010 due to relatively strong lamb supplies in late 2009 and a smaller lamb crop. Cull ewe disposals were 83,000 head or 21% lower at 305,000 head.

### Quarterly lamb supplies at export meat plants, 2010 vs. 2009 ('000 head)



Source: Dept of Agriculture, Fisheries and Food

**Distribution of Irish Sheepmeat Production 2010(e) – Tonnes cwe**

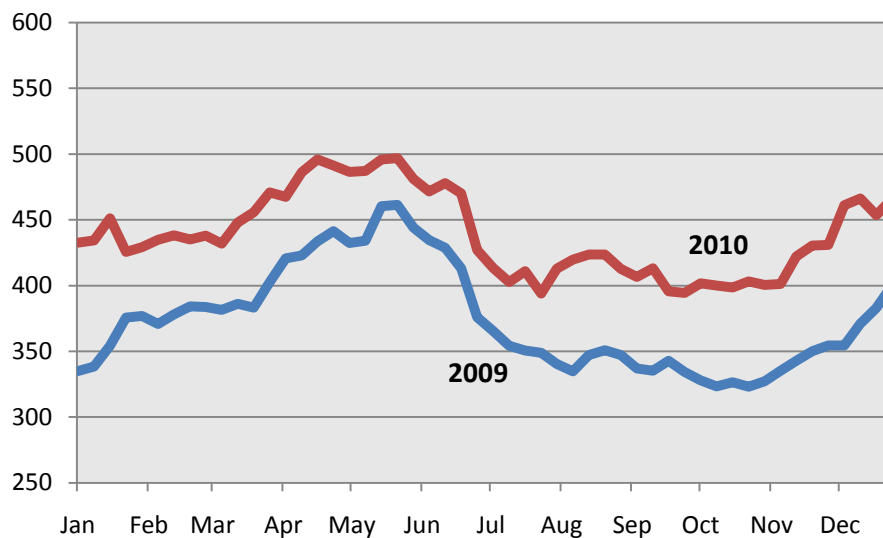


A sharp slowdown in domestic consumption, which has seen Irish retail sales of lamb drop by more than 10% in the year to November helped offset some of the drop in disposals. The volume of Irish sheepmeat exports is estimated to have fallen by 11% to 36,500 tonnes.

## **Lamb Prices**

On average, lamb prices were up 17% on 2009 at €4.39 /kg dw excl. VAT, with prices significantly stronger during the second half of the year, when lamb prices were almost 21 per cent higher during the period than a year earlier at €4.19/kg dw excl. VAT, despite an ongoing weak British pound undermining Irish competitiveness.

### **Irish Lamb Prices, 2010 vs. 2009 (c/kg dw excl. VAT)**



Source: Dept of Agriculture, Fisheries and Food.

## **Sheepmeat Exports**

The volume of Irish sheepmeat exports is estimated to have fallen by just over 10% to stand at 36,500 tonnes as increased carcass weights helped to partly offset the drop in supplies. The proportion of Irish exports that are in cut form continued to grow with just over 40% of exports in boneless form up to the end of August compared to 37% during the corresponding period in 2009.

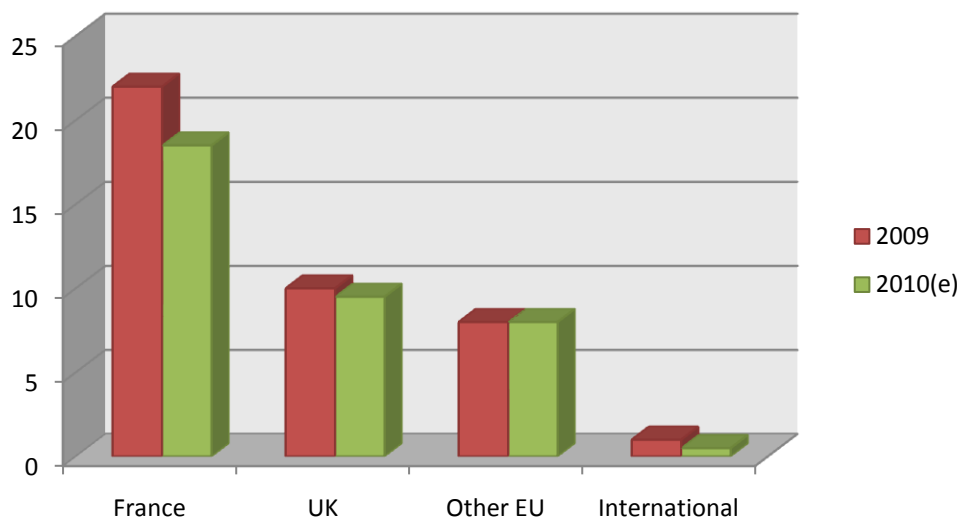
The market diversification evident over recent years was largely maintained with a quarter of shipments destined for markets other than France and the UK in 2010.

For the year, it is estimated that, despite the drop in volume, **the value of sheepmeat exports increased by 4% to €170 million.**

The **French market** continued to account for half of Irish sheepmeat exports in 2010. For the year shipments are estimated to have reached 18,500 tonnes and were valued at €95 million.

Despite the relative strengthening of sterling, UK lamb remained reasonably competitive on the market while New Zealand prices increased due to exchange rate movements and the relative lack of availability.

### Irish Sheepmeat Exports 2010 vs. 2009 ('000 tonnes cwe)



Source: Bord Bia estimates

Exports to the **UK** held up well despite the lower export availability. For the year, it is estimated that exports reached around 9,500 tonnes, with a higher proportion of shipments consisting of lamb.

Shipments to **other EU markets** held up somewhat better with volumes to Belgium and Northern Europe reasonably maintained. Shipments of light lamb to Mediterranean markets improved towards the end of the year due to a better demand from Portugal. In addition, markets such as Switzerland and Tunisia are of increasing interest to Irish exporters.

## **Outlook for 2011**

The market prospects for 2011 remain positive with lower New Zealand supplies expected to help maintain demand on the European market. Overall, EU sheepmeat production is forecast to fall by more than 1%.

In the UK, improved producer confidence following better market conditions throughout 2010 have led to a stabilisation of the breeding flock. This combined with slower culling rates and improved fertility is expected to leave UK output largely unchanged in 2011 at 268,000 tonnes. Little change in UK sheepmeat trade is expected to materialise, although any weakening in domestic demand could benefit exports if the pound remains weak against the Euro.

Cold wet conditions during their spring has hit the 2010/11 lamb New Zealand lamb crop with numbers estimated to be back by 10%. As a result, Beef and Lamb New Zealand expect the number of lambs available to fall by almost 7% in the year to 30<sup>th</sup> September 2011. While carcass weights are expected to rise slightly, the volume of lamb available to export is likely to be around 6% lower.

In terms of export to the EU, figures for January to October 2010 show a drop of 11% in shipments from New Zealand, although within this chilled volumes were 9% higher at 48,000 tonnes. The prospects for 2011 suggest a further tightening in NZ supplies on the EU market.

In France, sheepmeat output is expected to drop by around 1% while consumption is forecast to recover by 2%. This is forecast to lead to rise of 4% in imports.

The prospects for Irish sheep supplies in 2011 point to a more stable situation with renewed producer confidence and stronger demand for breeding stock helping availability. For the year, a further decline of around 2% is anticipated in Irish sheep supplies. This would bring export volumes to 36,000 tonnes, assuming sales on the domestic market stabilise. However, weather conditions during the lambing period could impact on lamb numbers, particularly if the recent cold weather persists.

# Statistical Appendix

## Cattle and Beef

### Irish Beef Balance Sheet ('000 tonnes cwe)

	1998	1999	2000	2001	2002	2003	2004	2005	2006	2007	2008	2009	2010(e)
<b>GIP Production*</b>	<b>611</b>	<b>704</b>	<b>633</b>	<b>591</b>	<b>554</b>	<b>590</b>	<b>578</b>	<b>567</b>	<b>599</b>	<b>603</b>	<b>560</b>	<b>556</b>	<b>603</b>
<b>Net Production*</b>	<b>586</b>	<b>634</b>	<b>568</b>	<b>569</b>	<b>530</b>	<b>561</b>	<b>555</b>	<b>542</b>	<b>567</b>	<b>581</b>	<b>537</b>	<b>514</b>	<b>559</b>
+ Beef Imports	15	10	12	21	16	18	30	35	41	30	34	33	33
- Beef Exports (1)	523	643	520	350	464	500	499	489	520	523	483	460	505
of which:													
Commerical	510	554	504	350	463	495	499	489	520	523	483	460	505
<b>Stock Change (2)</b>	<b>-3</b>	<b>-80</b>	<b>-18</b>	<b>164</b>	<b>5</b>	<b>-5</b>	<b>0</b>	<b>0</b>	<b>0</b>	<b>0</b>	<b>0</b>	<b>0</b>	<b>0</b>
<b>Consumption (3)</b>													
- '000 tonnes cwe	81	81	78	76	77	84	86	88	88	88	88	87	87
- Kg/head	21.9	21.6	20.6	19.8	19.7	21.1	21.3	21.3	20.8	20.3	19.9	19.5	19.5

\*excludes animals removed under BSE control programmes

(1) Includes sales of Intervention beef

(2) Changes in public stocks, market support schemes such as PFD & SPS and private stock changes due to exceptional market conditions

(3) Residual figure after allowing for stock changes

### Irish Cattle Numbers, June 1998-2009 ('000 head)

	1998	1999	2000	2001	2002	2003	2004	2005	2006	2007	2008	2009
<b>Total Cattle</b>	<b>7,641</b>	<b>7,389</b>	<b>7,039</b>	<b>7,050</b>	<b>6,991</b>	<b>7,000</b>	<b>7,017</b>	<b>6,982</b>	<b>6,917</b>	<b>6,705</b>	<b>6,721</b>	<b>6,714</b>
<b>Cows</b>	<b>2,482</b>	<b>2,418</b>	<b>2,365</b>	<b>2,380</b>	<b>2,318</b>	<b>2,343</b>	<b>2,363</b>	<b>2,342</b>	<b>2,325</b>	<b>2,268</b>	<b>2,294</b>	<b>2,283</b>
- Dairy	1,234	1,201	1,178	1,183	1,164	1,156	1,156	1,114	1,109	1,087	1,114	1,129
- Other	1,248	1,217	1,187	1,197	1,154	1,187	1,207	1,228	1,215	1,181	1,180	1,154
<b>Heifers in-calf</b>	<b>356</b>	<b>331</b>	<b>332</b>	<b>331</b>	<b>374</b>	<b>353</b>	<b>370</b>	<b>378</b>	<b>386</b>	<b>371</b>	<b>373</b>	<b>366</b>
- Dairy	229	214	207	198	231	216	230	230	229	218	225	227
- Other	127	117	125	133	143	137	140	148	157	153	148	139
<b>Bulls</b>	<b>53</b>	<b>55</b>	<b>56</b>	<b>59</b>	<b>63</b>	<b>64</b>	<b>67</b>	<b>68</b>	<b>69</b>	<b>68</b>	<b>69</b>	<b>67</b>
<b>Two years old &amp; over</b>	<b>1,002</b>	<b>1,058</b>	<b>1,017</b>	<b>941</b>	<b>844</b>	<b>902</b>	<b>910</b>	<b>929</b>	<b>951</b>	<b>928</b>	<b>902</b>	<b>950</b>
- Male	708	737	722	642	560	599	605	619	640	615	589	611
- Female	294	321	295	299	284	303	305	310	312	314	313	340
<b>One to two years</b>	<b>1,783</b>	<b>1,706</b>	<b>1,517</b>	<b>1,515</b>	<b>1,593</b>	<b>1,577</b>	<b>1,535</b>	<b>1,575</b>	<b>1,554</b>	<b>1,476</b>	<b>1,467</b>	<b>1,462</b>
- Male	1,086	1,039	912	913	992	983	950	940	916	844	843	830
- Female	697	667	605	602	601	594	585	635	638	632	624	632
<b>Under one year</b>	<b>1,965</b>	<b>1,821</b>	<b>1,752</b>	<b>1,824</b>	<b>1,799</b>	<b>1,761</b>	<b>1,772</b>	<b>1,690</b>	<b>1,632</b>	<b>1,594</b>	<b>1,616</b>	<b>1,586</b>
- Male	1055	965	919	955	953	922	930	843	802	785	801	769
- Female	910	856	833	869	846	839	842	847	830	809	815	817

Source: CSO

Figures may vary slightly due to rounding. Revised Intercensal series, June 1995-2000

### Irish Cattle Throughput at Export Meat Plants, 1999-2010 ('000 head)

	1999	2000	2001	2002	2003	2004	2005	2006	2007	2008	2009	2010
<b>Total Cattle</b>	<b>1,997</b>	<b>1,755</b>	<b>1,781</b>	<b>1,666</b>	<b>1,762</b>	<b>1,724</b>	<b>1,606</b>	<b>1,691</b>	<b>1,691</b>	<b>1,591</b>	<b>1,525</b>	<b>1,643</b>
- Steers	1061	900	955	862	919	860	785	811	779	706	636	664
- Heifers	461	430	376	418	432	404	362	418	425	415	405	444
- Cows	415	360	366	322	335	344	342	358	357	330	330	337
- Young Bulls	22	48	65	40	54	94	95	79	105	109	120	150
- Others	38	17	19	24	22	22	22	25	25	31	34	48

### Average Cattle Carcase Weights, 1998-2010 (kg)

	1998	1999	2000	2001	2002	2003	2004	2005	2006	2007	2008	2009	2010
Steers	343	337	338	337	334	334	338	352	351	358	352	357	356
Heifers	279	268	265	267	265	267	272	286	287	291	288	289	294
Cows	278	279	281	287	284	288	295	304	301	305	304	298	309
Young Bulls					333	321	320	351	362	368	360	360	358

Source: Department of Agriculture, Fisheries & Food.

### Irish Beef Exports, 1998 - 2010 ('000 tonnes cwe)

	1998	1999	2000	2001	2002	2003	2004	2005	2006	2007	2008	2009	2010 (e)
<b>Total</b>	<b>510</b>	<b>554</b>	<b>504</b>	<b>350</b>	<b>463</b>	<b>495</b>	<b>499</b>	<b>489</b>	<b>520</b>	<b>523</b>	<b>483</b>	<b>460</b>	<b>505</b>
of which to:													
<b>UK</b>	<b>85</b>	<b>95</b>	<b>112</b>	<b>225</b>	<b>257</b>	<b>251</b>	<b>270</b>	<b>260</b>	<b>267</b>	<b>278</b>	<b>261</b>	<b>244</b>	<b>260</b>
<b>Cont. EU</b>	<b>130</b>	<b>150</b>	<b>135</b>	<b>72</b>	<b>116</b>	<b>162</b>	<b>173</b>	<b>192</b>	<b>217</b>	<b>239</b>	<b>217</b>	<b>213</b>	<b>237</b>
- France	45	49	36	13	18	20	24	45	55	56	51	52	54
- Italy	28	32	30	11	20	35	40	42	47	48	45	45	49
- Holland	25	32	27	25	30	39	42	40	41	47	42	40	45
- Scandinavia	22	25	24	13	30	35	34	33	35	42	44	38	42
- Spain	5	6	6	3	6	9	12	14	16	18	13	14	14
- Portugal	1	2	4	3	4	6	8	9	10	11	10	10	9
- Other*	4	4	8	4	8	18	13	9	13	16	12	14	24
<b>Int. Mkts</b>	<b>295</b>	<b>309</b>	<b>257</b>	<b>53</b>	<b>90</b>	<b>82</b>	<b>56</b>	<b>37</b>	<b>38</b>	<b>6</b>	<b>5</b>	<b>3</b>	<b>8</b>
- Russia	52	33	11	43	83	76	47	27	30	4	2	1	4
- Egypt	120	154	150	0	0	1	1	1	0	0	0	0	0
- Other	123	122	96	10	7	5	8	9	8	2	3	2	2

Source: Bord Bia estimates

\* includes New Member States from 2004

(e) 2010 figures estimated

### Irish Live Cattle Exports, 1998-2010 ('000 head)

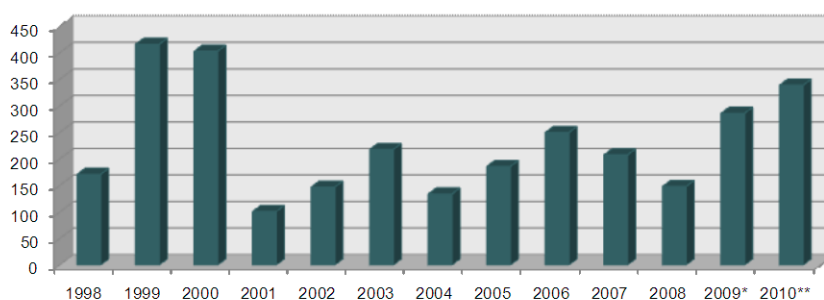
	1998	1999	2000	2001	2002	2003	2004	2005	2006	2007	2008	2009*	2010**
<b>Total</b>	<b>171</b>	<b>416</b>	<b>403</b>	<b>101</b>	<b>147</b>	<b>218</b>	<b>134</b>	<b>186</b>	<b>250</b>	<b>208</b>	<b>148</b>	<b>286</b>	<b>339</b>
of which to:													
<b>Int. Mkts</b>	<b>29</b>	<b>74</b>	<b>65</b>	<b>11</b>	<b>32</b>	<b>37</b>	<b>12</b>	<b>10</b>	<b>0.4</b>	<b>0.6</b>	<b>0.5</b>	<b>0.4</b>	<b>3</b>
- Lebanon	29	74	63	11	32	37	12	10	0	0	0	0	0
- Other	0	0	0	0	0	0	0	0	0.4	0.6	0.5	0.4	3
<b>Cont. EU</b>	<b>137</b>	<b>324</b>	<b>311</b>	<b>40</b>	<b>73</b>	<b>141</b>	<b>74</b>	<b>148</b>	<b>221</b>	<b>171</b>	<b>113</b>	<b>196</b>	<b>232</b>
- Spain	87	196	182	32	57	86	21	50	72	64	27	49	61
- Italy	30	75	60	5	10	18	20	47	67	47	47	56	71
- Holland	15	35	53	1	5	35	31	44	52	41	27	69	62
- France	1	10	14	1	0	0	0	5	12	10	3	2	3
- Belgium	3	5	1	0	0	1	2	1	17	7	9	19	34
- Other	1	3	1	1	1	1	0	1	1	2	0	1	1
<b>United Kingdom</b>	<b>5</b>	<b>18</b>	<b>27</b>	<b>50</b>	<b>42</b>	<b>40</b>	<b>48</b>	<b>28</b>	<b>28.5</b>	<b>36</b>	<b>34.5</b>	<b>90</b>	<b>104</b>

NOTE: From 2002, live exports are based on GMMIS database & are *not* directly comparable with earlier years

\*2009 figure reflects 52 weeks ending 26/12/2008 (figures may not add up due to rounding)

\*\*2010 figure reflects 52 weeks ending 25/12/2010 (figures may not add up due to rounding)

### Irish Live Cattle Exports, 1998 - 2010 ('000 head)

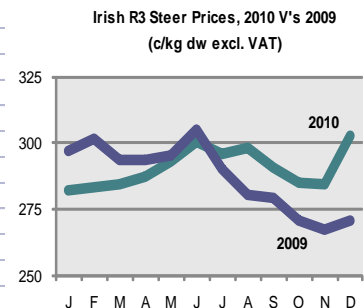


## Irish Cattle Prices by Month, 2001-2010 (c/kg dw excl VAT)

### R3 Steers

	2001	2002	2003	2004	2005	2006	2007	2008	2009	2010
	c/kg	c/kg	c/kg	c/kg	c/kg	c/kg	c/kg	c/kg	c/kg	c/kg
January	246.5	243.4	235.8	245.4	267.1	278.6	283.9	297.2	296.9	281.9
February	236.2	248.9	233.9	252.8	277.5	279.5	284.9	313.8	301.8	283.2
March	241.6	246.1	228.6	254.8	280.4	284.7	282.5	320.3	293.5	284.6
April	243.0	244.7	229.1	262.2	282.0	290.2	284.2	327.0	293.9	287.4
May	236.9	243.1	230.7	266.9	281.9	293.2	276.0	326.0	295.2	293.0
June	238.2	242.9	235.2	273.5	279.3	290.5	277.1	339.6	305.1	300.6
July	236.3	235.3	233.6	264.5	256.6	278.1	271.0	328.8	290.2	296.2
August	219.3	227.2	231.6	254.9	238.7	270	271.5	325.1	280.2	298.1
September	221.1	225.3	224.7	247.4	235.2	276.2	271.3	320.3	279.1	290.5
October	215.2	221.9	225.4	234.7	235.3	279.3	266.6	310.1	270.5	285.1
November	215.7	223.2	229.8	236.5	251.5	279.1	269.8	301.5	267.4	284.6
December	220.3	230.1	239.1	242.0	269.5	279.1	275.1	301.3	270.7	302.9
<b>YEAR</b>	<b>230.9</b>	<b>236.0</b>	<b>231.5</b>	<b>253.0</b>	<b>262.9</b>	<b>281.6</b>	<b>276.2</b>	<b>317.6</b>	<b>287.0</b>	<b>290.7</b>

Source: Department of Agriculture, Fisheries & Food

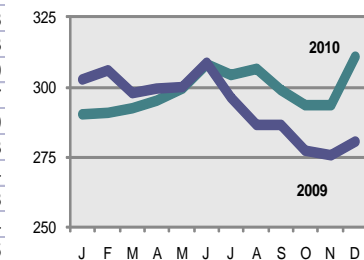


### R3 Heifers

	2001	2002	2003	2004	2005	2006	2007	2008	2009	2010
	c/kg	c/kg	c/kg	c/kg	c/kg	c/kg	c/kg	c/kg	c/kg	c/kg
January	248.2	250.4	240.7	243.5	268.4	279.1	286.5	300.7	302.9	290.1
February	232.4	251.9	238.2	252.2	277.7	279.9	287.3	316.5	305.8	290.8
March	240.9	247.3	233.6	254.6	281.1	285.5	285.9	323.2	298.0	292.3
April	241.6	245.5	232.9	261.8	283.7	291.1	287.6	329.9	299.7	294.9
May	238.8	243.7	233.4	266.8	283.9	294	280.3	329.5	300.1	299.7
June	240.5	244.2	237.2	274.1	282.3	292.7	283.0	342.2	308.9	307.9
July	234.8	236.9	235.3	265.6	263.8	282.3	278.7	332.8	296.1	304.3
August	219.3	228.2	235.3	255.6	249.4	274	279.0	330.1	286.7	306.4
September	223.6	228.1	228.2	249.6	246.4	279.5	278.8	326.0	286.3	298.8
October	221.8	225.2	227.1	238.0	244.8	282.4	274.4	317.7	277.0	293.4
November	227.5	230.2	232.5	241.4	258.7	282.4	277.4	308.9	275.6	293.5
December	233.6	236.7	239.7	242.0	270.8	283.8	284.9	308.9	280.4	310.8
<b>YEAR</b>	<b>233.6</b>	<b>239.0</b>	<b>234.5</b>	<b>253.8</b>	<b>267.6</b>	<b>283.9</b>	<b>282.0</b>	<b>322.2</b>	<b>293.1</b>	<b>298.6</b>

Source: Department of Agriculture, Fisheries & Food

Irish R3 Heifer Prices, 2010 V's 2009  
(c/kg dw excl. VAT)

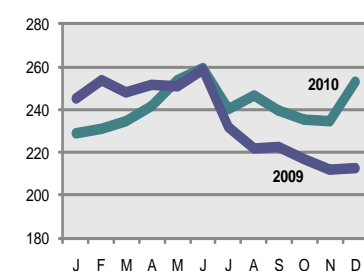


### O3 Cows

	2001	2002	2003	2004	2005	2006	2007	2008	2009	2010
	c/kg	c/kg	c/kg	c/kg	c/kg	c/kg	c/kg	c/kg	c/kg	c/kg
January	165.1	172.6	152.4	179.9	205.2	228.8	230.1	242.0	245.0	229.0
February	166.0	171.8	166.1	197.2	220.0	233.2	232.0	262.3	253.6	231.2
March	169.0	175.2	167.8	202.9	227.8	241.6	231.8	271.0	248.0	234.7
April	175.6	177.1	169.0	210.1	230.0	249.1	234.5	277.2	251.3	241.6
May	167.1	175.3	173.9	217.5	228.9	252.7	227.7	279.8	250.7	253.5
June	164.4	166.8	179.5	223.9	213.7	235.4	226.9	287.5	258.8	259.2
July	163.9	154.5	168.3	200.6	190.7	216.9	213.2	273.0	231.9	240.2
August	161.8	151.5	166.1	189.6	189.9	218.1	216.3	271.9	222.0	246.4
September	169.4	154.6	161.1	188.0	193.6	225.0	218.2	274.3	222.9	239.7
October	164.7	149.6	163.4	181.3	187.9	227.0	215.9	267.6	217.2	235.5
November	164.3	134.7	161.4	183.8	198.9	226.4	219.3	252.5	212.3	234.7
December	178.8	136.7	165.3	183.0	209.7	221.2	223.1	248.8	212.5	252.9
<b>YEAR</b>	<b>167.5</b>	<b>161.0</b>	<b>166.2</b>	<b>196.5</b>	<b>208.0</b>	<b>231.3</b>	<b>224.1</b>	<b>267.3</b>	<b>235.5</b>	<b>241.6</b>

Source: Department of Agriculture, Fisheries & Food

Irish O3 Cow Prices, 2010 V's 2009  
(c/kg dw excl. VAT)



## Quarterly Cattle Slaughtering at Meat Export Premises 1998 - 2010 ('000 head)

### Steers

	1998	1999	2000	2001	2002	2003	2004	2005	2006	2007	2008	2009	2010
<b>First Quarter</b>	<b>309</b>	<b>308</b>	<b>243</b>	<b>246</b>	<b>201</b>	<b>212</b>	<b>192</b>	<b>172</b>	<b>191</b>	<b>178</b>	<b>154</b>	<b>132</b>	<b>148</b>
<i>% of Total</i>	31.1%	29.0%	27.0%	25.8%	23.3%	23.1%	22.3%	21.9%	23.6%	22.9%	21.8%	20.8%	22.3%
<b>Second Quarter</b>	<b>198</b>	<b>225</b>	<b>202</b>	<b>230</b>	<b>202</b>	<b>212</b>	<b>173</b>	<b>134</b>	<b>187</b>	<b>171</b>	<b>157</b>	<b>134</b>	<b>144</b>
<i>% of Total</i>	20.0%	21.2%	22.4%	24.1%	23.4%	23.1%	20.1%	17.1%	23.1%	22.0%	22.2%	21.1%	21.7%
<b>Third Quarter</b>	<b>203</b>	<b>247</b>	<b>220</b>	<b>227</b>	<b>237</b>	<b>258</b>	<b>259</b>	<b>262</b>	<b>218</b>	<b>210</b>	<b>210</b>	<b>180</b>	<b>185</b>
<i>% of Total</i>	20.5%	23.3%	24.4%	23.8%	27.5%	28.1%	30.1%	33.4%	26.9%	27.0%	29.7%	28.3%	27.9%
<b>Fourth Quarter</b>	<b>282</b>	<b>281</b>	<b>235</b>	<b>252</b>	<b>222</b>	<b>237</b>	<b>236</b>	<b>217</b>	<b>215</b>	<b>219</b>	<b>186</b>	<b>190</b>	<b>187</b>
<i>% of Total</i>	28.4%	26.5%	26.1%	26.4%	25.8%	25.8%	27.4%	27.6%	26.5%	28.1%	26.3%	29.9%	28.2%
<b>YEAR</b>	<b>992</b>	<b>1,061</b>	<b>900</b>	<b>955</b>	<b>862</b>	<b>919</b>	<b>860</b>	<b>785</b>	<b>811</b>	<b>778</b>	<b>707</b>	<b>636</b>	<b>664</b>

### Heifers

	1998	1999	2000	2001	2002	2003	2004	2005	2006	2007	2008	2009	2010
<b>First Quarter</b>	<b>84</b>	<b>118</b>	<b>132</b>	<b>100</b>	<b>109</b>	<b>117</b>	<b>106</b>	<b>89</b>	<b>118</b>	<b>119</b>	<b>115</b>	<b>104</b>	<b>123</b>
<i>% of Total</i>	23.9%	25.6%	30.7%	26.6%	26.1%	27.1%	26.2%	24.6%	28.2%	28.0%	27.7%	25.6%	27.7%
<b>Second Quarter</b>	<b>73</b>	<b>109</b>	<b>97</b>	<b>82</b>	<b>84</b>	<b>91</b>	<b>78</b>	<b>82</b>	<b>97</b>	<b>96</b>	<b>99</b>	<b>94</b>	<b>111</b>
<i>% of Total</i>	20.7%	23.6%	22.6%	21.8%	20.1%	21.1%	19.3%	22.7%	23.2%	22.6%	23.9%	23.2%	25.0%
<b>Third Quarter</b>	<b>93</b>	<b>110</b>	<b>100</b>	<b>83</b>	<b>93</b>	<b>94</b>	<b>93</b>	<b>82</b>	<b>93</b>	<b>96</b>	<b>97</b>	<b>99</b>	<b>103</b>
<i>% of Total</i>	26.4%	23.9%	23.3%	22.1%	22.2%	21.8%	23.0%	22.7%	22.2%	22.6%	23.4%	24.4%	23.2%
<b>Fourth Quarter</b>	<b>102</b>	<b>124</b>	<b>101</b>	<b>111</b>	<b>132</b>	<b>130</b>	<b>127</b>	<b>109</b>	<b>110</b>	<b>114</b>	<b>104</b>	<b>109</b>	<b>107</b>
<i>% of Total</i>	29.0%	26.9%	23.5%	29.5%	31.6%	30.1%	31.4%	30.1%	26.3%	26.8%	25.1%	26.8%	24.1%
<b>YEAR</b>	<b>352</b>	<b>461</b>	<b>430</b>	<b>376</b>	<b>418</b>	<b>432</b>	<b>404</b>	<b>362</b>	<b>418</b>	<b>425</b>	<b>415</b>	<b>406</b>	<b>444</b>

### Cows

	1998	1999	2000	2001	2002	2003	2004	2005	2006	2007	2008	2009	2010
<b>First Quarter</b>	<b>82</b>	<b>94</b>	<b>97</b>	<b>67</b>	<b>74</b>	<b>72</b>	<b>65</b>	<b>57</b>	<b>76</b>	<b>84</b>	<b>62</b>	<b>64</b>	<b>79</b>
<i>% of Total</i>	21.0%	22.7%	26.9%	18.3%	23.0%	21.5%	18.9%	16.7%	21.2%	23.6%	18.8%	19.4%	23.4%
<b>Second Quarter</b>	<b>102</b>	<b>98</b>	<b>104</b>	<b>64</b>	<b>61</b>	<b>74</b>	<b>68</b>	<b>84</b>	<b>88</b>	<b>87</b>	<b>80</b>	<b>81</b>	<b>88</b>
<i>% of Total</i>	26.2%	23.6%	28.9%	17.5%	18.9%	22.1%	19.8%	24.6%	24.6%	24.4%	24.2%	24.5%	26.1%
<b>Third Quarter</b>	<b>115</b>	<b>110</b>	<b>91</b>	<b>105</b>	<b>88</b>	<b>89</b>	<b>97</b>	<b>97</b>	<b>95</b>	<b>90</b>	<b>97</b>	<b>96</b>	<b>86</b>
<i>% of Total</i>	29.5%	26.5%	25.3%	28.7%	27.3%	26.6%	28.2%	28.4%	26.5%	25.3%	29.4%	29.1%	25.5%
<b>Fourth Quarter</b>	<b>91</b>	<b>113</b>	<b>68</b>	<b>130</b>	<b>99</b>	<b>100</b>	<b>114</b>	<b>104</b>	<b>99</b>	<b>95</b>	<b>91</b>	<b>89</b>	<b>84</b>
<i>% of Total</i>	23.3%	27.2%	18.9%	35.5%	30.7%	29.9%	33.1%	30.4%	27.7%	26.7%	27.6%	27.0%	24.9%
<b>YEAR</b>	<b>390</b>	<b>415</b>	<b>360</b>	<b>366</b>	<b>322</b>	<b>335</b>	<b>344</b>	<b>342</b>	<b>358</b>	<b>356</b>	<b>330</b>	<b>330</b>	<b>337</b>

## Sheep and Sheepmeat

### Irish Sheepmeat Balance Sheet ('000 tonnes cwe)

	1998	1999	2000	2001	2002	2003	2004	2005	2006	2007	2008	2009	2010(e)
<b>GIP Production</b>	<b>82</b>	<b>85</b>	<b>78</b>	<b>74</b>	<b>64</b>	<b>60</b>	<b>68</b>	<b>70</b>	<b>68.7</b>	<b>62.4</b>	<b>56.2</b>	<b>52.5</b>	<b>42.6</b>
<b>Net Production (Slaughterings)</b>	<b>87</b>	<b>90</b>	<b>83</b>	<b>78</b>	<b>67</b>	<b>63</b>	<b>72</b>	<b>75</b>	<b>71.5</b>	<b>66.5</b>	<b>58.7</b>	<b>55.1</b>	<b>49.0</b>
+ Sheepmeat Imports	2.0	2.0	2.0	2.0	2	1.8	3	3	3.0	3.0	3.1	3.7	3.2
- Sheepmeat Exports	59	60	55	62	49	44	55	58	54.0	49.0	43.0	41.0	36.5
<b>Consumption</b>													
- '000 Tonnes cwe	30.0	32.0	30.0	18.0	19.2	21.1	20.0	20.0	20.5	20.5	18.8	17.8	15.7
- Kg/head	8.1	8.6	7.9	4.7	4.9	5.3	4.9	4.8	4.8	4.7	4.3	4.0	3.5

### Irish Sheep Numbers, June 1998 - 2009 ('000 head)

	1998	1999	2000	2001	2002	2003	2004	2005	2006	2007	2008	2009(e)
<b>TOTAL SHEEP</b>	<b>8,312</b>	<b>7,926</b>	<b>7,555</b>	<b>7,331</b>	<b>7,209</b>	<b>6,849</b>	<b>6,777</b>	<b>6,392</b>	<b>5,973</b>	<b>5,522</b>	<b>5,061</b>	<b>4,785</b>
<b>Total Breeding Flock</b>	<b>4,577</b>	<b>4,399</b>	<b>4,216</b>	<b>4,020</b>	<b>3,909</b>	<b>3,718</b>	<b>3,670</b>	<b>3,455</b>	<b>3,200</b>	<b>2,944</b>	<b>2,696</b>	<b>2,531</b>
Ewes for Breeding	4,463	4,287	4,106	3,915	3,804	3,615	3,543	3,558	3,104	2,854	2,614	2,457
Rams	114	112	110	105	105	103	100	96	96	90	82	74
<b>Other Sheep</b>	<b>3,735</b>	<b>3,527</b>	<b>3,339</b>	<b>3,311</b>	<b>3,300</b>	<b>3,131</b>	<b>3,107</b>	<b>2,938</b>	<b>2,773</b>	<b>2,578</b>	<b>2,365</b>	<b>2,255</b>

Source: CSO

Figures may not add up due to rounding

Revised Intercensal series, June 1995-2000

### Irish Sheep Throughput at Export Meat Plants, 1998-2010 ('000 head)

	1998	1999	2000	2001	2002	2003	2004	2005	2006	2007	2008	2009	2010
<b>TOTAL</b>	<b>3,652</b>	<b>3,902</b>	<b>3,541</b>	<b>3,498</b>	<b>2,911</b>	<b>2,785</b>	<b>3,228</b>	<b>3,280</b>	<b>3,148</b>	<b>2,945</b>	<b>2,594</b>	<b>2,455</b>	<b>2,120</b>
of which:													
<b>Lambs</b>	<b>3,234</b>	<b>3,426</b>	<b>3,075</b>	<b>3,109</b>	<b>2,516</b>	<b>2,409</b>	<b>2,765</b>	<b>2,765</b>	<b>2,693</b>	<b>2,512</b>	<b>2,201</b>	<b>2,067</b>	<b>1,815</b>
<b>Cull Ewes</b>	<b>418</b>	<b>476</b>	<b>466</b>	<b>389</b>	<b>395</b>	<b>376</b>	<b>463</b>	<b>515</b>	<b>455</b>	<b>433</b>	<b>393</b>	<b>388</b>	<b>305</b>

### Irish Sheepmeat Exports, 1999-2010 ('000 tonnes cwe)

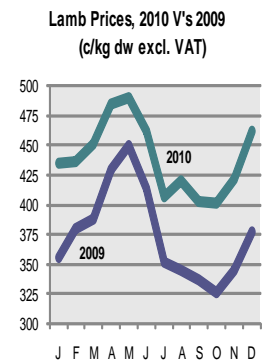
	1999	2000	2001	2002	2003	2004	2005	2006	2007	2008	2009	2010(e)
<b>Total</b>	<b>60.0</b>	<b>55.0</b>	<b>62.0</b>	<b>49.0</b>	<b>44.0</b>	<b>53.6</b>	<b>58.0</b>	<b>54.0</b>	<b>49.0</b>	<b>43.0</b>	<b>41.0</b>	<b>36.5</b>
of which to:												
France	45.0	41.0	47.0	35.0	29.0	32.3	33.7	31.5	27.5	22.5	22.0	18.5
UK	4.0	5.0	5.9	6.8	8.0	12.0	14.0	12.5	12.5	12.0	10.5	9.7
Sweden	0.5	0.5	0.3	0.7	1.1	1.6	2.0	2.6	2.1	2.5	1.5	1.5
Germany	4.5	3.1	1.7	1.7	1.8	2.4	2.1	2.0	1.7	1.7	1.6	1.6
Italy	1.5	0.8	2.0	1.9	1.1	1.2	1.0	1.3	1.1	1.2	2.0	2.0
Spain	1.6	0.5	0.1	0.1	0.1	0.3	0.8	0.4	0.2	0.1	0.3	0.3
Portugal	1.0	1.5	1.5	1.5	1.0	1.3	1.0	0.8	0.4	0.6	1.0	1.0
Other	1.9	2.6	3.5	1.3	1.9	2.5	3.4	2.9	3.5	2.4	2.1	1.9

Source: Bord Bia estimates

### Irish Lamb Prices by Month, 2002-2010 (c/kg dw excl. VAT)

	2002	2003	2004	2005	2006	2007	2008	2009	2010
	c/kg	c/kg	c/kg	c/kg	c/kg	c/kg	c/kg	c/kg	c/kg
January	476.1	363.3	348.3	350.9	316.8	334.9	339.6	356.1	434.6
February	411.6	367.1	389.4	343.8	322.1	346.7	368.7	379.3	436.5
March	383.1	370.8	405.2	353.1	341.5	363.7	393.1	388.4	451.6
April	402.7	421.3	425.6	366.2	393.7	391.2	406.6	430.2	485.2
May	419.1	472.0	422.3	374.0	408.0	366.8	430.6	450.0	489.5
June	385.3	396.7	381.0	372.6	386.7	357.0	413.6	413.1	461.7
July	328.5	341.6	354.0	334.9	336.6	340.4	362.4	351.9	406.8
August	347.1	344.8	332.8	315.6	326.0	359.9	345.5	345.0	419.9
September	354.9	334.2	332.0	306.0	325.4	366.7	346.2	337.3	402.5
October	339.9	323.7	320.8	303.8	329.1	346.0	332.4	325.7	400.9
November	348.6	321.8	330.4	314.2	327.5	333.4	329.6	345.7	421.2
December	351.9	324.0	337.3	324.4	330.8	334.9	329.2	377.2	461.8
<b>YEAR</b>	<b>380.1</b>	<b>365.1</b>	<b>364.9</b>	<b>338.3</b>	<b>345.3</b>	<b>353.5</b>	<b>366.5</b>	<b>375.0</b>	<b>439.4</b>

Source: Department of Agriculture, Fisheries & Food



### Quarterly Sheep Slaughtering at Meat Export Premises 1998 - 2010 ('000 head)

#### Lambs

	1998	1999	2000	2001	2002	2003	2004	2005	2006	2007	2008	2009	2010
<b>First Quarter</b>	<b>487</b>	<b>571</b>	<b>470</b>	<b>494</b>	<b>248</b>	<b>427</b>	<b>451</b>	<b>551</b>	<b>476</b>	<b>428</b>	<b>432</b>	<b>427</b>	<b>349</b>
% of Total	15.1%	16.7%	15.3%	15.9%	9.9%	17.7%	16.3%	19.9%	17.7%	17.0%	19.6%	20.7%	19.2%
<b>Second Quarter</b>	<b>900</b>	<b>1,000</b>	<b>937</b>	<b>825</b>	<b>677</b>	<b>666</b>	<b>710</b>	<b>729</b>	<b>740</b>	<b>625</b>	<b>541</b>	<b>473</b>	<b>383</b>
% of Total	27.8%	29.2%	30.5%	26.5%	26.9%	27.6%	25.7%	26.4%	27.5%	24.9%	24.6%	22.9%	21.1%
<b>Third Quarter</b>	<b>1,048</b>	<b>1,000</b>	<b>910</b>	<b>1,020</b>	<b>897</b>	<b>731</b>	<b>879</b>	<b>755</b>	<b>810</b>	<b>815</b>	<b>622</b>	<b>586</b>	<b>554</b>
% of Total	32.4%	29.2%	29.6%	32.8%	35.7%	30.3%	31.8%	27.3%	30.1%	32.4%	28.3%	28.4%	30.5%
<b>Fourth Quarter</b>	<b>799</b>	<b>855</b>	<b>758</b>	<b>770</b>	<b>694</b>	<b>585</b>	<b>725</b>	<b>730</b>	<b>667</b>	<b>644</b>	<b>606</b>	<b>581</b>	<b>529</b>
% of Total	24.7%	25.0%	24.7%	24.8%	27.6%	24.3%	26.2%	26.4%	24.8%	25.6%	27.5%	28.1%	29.1%
<b>YEAR</b>	<b>3,234</b>	<b>3,426</b>	<b>3,075</b>	<b>3,109</b>	<b>2,516</b>	<b>2,409</b>	<b>2,765</b>	<b>2,765</b>	<b>2,693</b>	<b>2,512</b>	<b>2,201</b>	<b>2,067</b>	<b>1,815</b>

#### Cull Ewes

	1998	1999	2000	2001	2002	2003	2004	2005	2006	2007	2008	2009	2010
<b>First Quarter</b>	<b>54</b>	<b>69</b>	<b>74</b>	<b>67</b>	<b>48</b>	<b>56</b>	<b>55</b>	<b>116</b>	<b>91</b>	<b>84</b>	<b>78</b>	<b>73</b>	<b>56</b>
% of Total	12.9%	14.5%	15.9%	17.2%	12.2%	14.9%	11.9%	22.5%	20.0%	19.4%	19.8%	18.8%	18.4%
<b>Second Quarter</b>	<b>70</b>	<b>117</b>	<b>118</b>	<b>109</b>	<b>86</b>	<b>97</b>	<b>104</b>	<b>109</b>	<b>104</b>	<b>94</b>	<b>89</b>	<b>92</b>	<b>71</b>
% of Total	16.7%	24.6%	25.3%	28.0%	21.8%	25.8%	22.5%	21.2%	22.9%	21.7%	22.6%	23.7%	23.3%
<b>Third Quarter</b>	<b>109</b>	<b>160</b>	<b>145</b>	<b>113</b>	<b>133</b>	<b>121</b>	<b>163</b>	<b>150</b>	<b>142</b>	<b>136</b>	<b>125</b>	<b>130</b>	<b>97</b>
% of Total	26.1%	33.6%	31.1%	29.0%	33.7%	32.2%	35.2%	29.1%	31.2%	31.4%	31.7%	33.5%	31.8%
<b>Fourth Quarter</b>	<b>185</b>	<b>130</b>	<b>129</b>	<b>100</b>	<b>128</b>	<b>102</b>	<b>141</b>	<b>140</b>	<b>118</b>	<b>119</b>	<b>102</b>	<b>93</b>	<b>81</b>
% of Total	44.3%	27.3%	27.7%	25.7%	32.4%	27.1%	30.5%	27.2%	25.9%	27.5%	25.9%	24.0%	26.6%
<b>YEAR</b>	<b>418</b>	<b>476</b>	<b>466</b>	<b>389</b>	<b>395</b>	<b>376</b>	<b>463</b>	<b>515</b>	<b>455</b>	<b>433</b>	<b>394</b>	<b>388</b>	<b>305</b>
% previous Dec ewe flock	9.7%	11.2%	11.4%	9.9%	10.4%	10.1%	12.6%	14.8%	14.2%	14.8%	14.8%	15.4%	12.9%

## Pigs and Pigmeat

### Irish Pigmeat Balance Sheet ('000 tonnes cwe)

	1998	1999	2000	2001	2002	2003	2004	2005	2006	2007	2008	2009*	2010(e)
<b>GIP Production</b>	<b>255</b>	<b>256</b>	<b>241</b>	<b>245</b>	<b>245</b>	<b>240</b>	<b>238</b>	<b>242</b>	<b>240</b>	<b>242</b>	<b>235</b>	<b>232</b>	<b>257</b>
<b>Net Production (Slaughterings)</b>	<b>241</b>	<b>250</b>	<b>226</b>	<b>238</b>	<b>230</b>	<b>217</b>	<b>204</b>	<b>205</b>	<b>209</b>	<b>205</b>	<b>201</b>	<b>196</b>	<b>215</b>
+ Pigmeat Imports	38	36	44	45	48	53	61	66	68	75	75	71	72
- Pigmeat Exports	118	121	142	150	135	129	119	129	139	142	138	127	147
<b>Consumption</b>													
- '000 Tonnes cwe	162	165	128	133	142	141	146	143	138	138	138	140	140
- Kg/head	44.1	44.6	34.3	35.0	37.0	36.0	36.8	34.5	32.6	31.8	31.4	31.6	31.6

\* 2009 figures are estimates prior to product recall in December

### Irish Pig Numbers, June 1998-2010 ('000 head)

	1998	1999	2000	2001	2002	2003	2004	2005	2006	2007	2008	2009	2010
<b>Total Pigs</b>	<b>1,819</b>	<b>1,787</b>	<b>1,722</b>	<b>1,741</b>	<b>1,770</b>	<b>1,713</b>	<b>1,645</b>	<b>1,688</b>	<b>1,643</b>	<b>1,588</b>	<b>1,467</b>	<b>1,468</b>	<b>1,485</b>
of which:													
<b>Breeding Pigs</b>	<b>200</b>	<b>193</b>	<b>181</b>	<b>187</b>	<b>185</b>	<b>176</b>	<b>170</b>	<b>174</b>	<b>170</b>	<b>167</b>	<b>157</b>	<b>158</b>	<b>159</b>
- Gilts in pig	26	26	20	21	19	19	19	19	22	21	24	22	21
- Sows in pig	111	110	110	107	110	104	102	100	97	98	91	92	93
- Other sows	39	37	30	36	32	31	29	32	30	30	24	24	28
- Gilts not yet served	20	17	18	20	21	18	17	20	19	16	16	19	15
- Boars	5	4	4	3	4	3	3	3	2	2	2	1	2
<b>Fattening Pigs</b>	<b>1,619</b>	<b>1,594</b>	<b>1,541</b>	<b>1,554</b>	<b>1,584</b>	<b>1,538</b>	<b>1,475</b>	<b>1,514</b>	<b>1,474</b>	<b>1,422</b>	<b>1,310</b>	<b>1,311</b>	<b>1,326</b>
- 80 kg and over	169	142	129	144	154	169	132	156	214	200	234	229	246
- 50kg and under 80kg	430	409	379	377	390	373	369	380	370	331	310	306	297
- 20kg and under 50kg	551	551	507	479	485	466	467	469	454	442	378	375	395
- Less than 20kg	469	493	527	555	556	529	507	509	436	450	387	400	388

Source: CSO (figures may not add up due to rounding)

### Irish Pig Throughput at Export Meat Plants, 1998-2009 ('000 head)

	1998	1999	2000	2001	2002	2003	2004	2005	2006	2007	2008	2009	2010
<b>Total Pigs</b>	<b>3,118</b>	<b>3,335</b>	<b>3,048</b>	<b>3,196</b>	<b>3,038</b>	<b>2,834</b>	<b>2,684</b>	<b>2,618</b>	<b>2,619</b>	<b>2,568</b>	<b>2,501</b>	<b>2,363</b>	<b>2,602</b>

### Northern Ireland Pig Supplies, 1998-2009 ('000 head)

	1998	1999	2000	2001	2002	2003	2004	2005	2006	2007	2008	2009	2010
<b>Total Pigs</b>	<b>1,403</b>	<b>1,274</b>	<b>1,295</b>	<b>1,067</b>	<b>1,228</b>	<b>1,337</b>	<b>1,311</b>	<b>1,297</b>	<b>1,195</b>	<b>1,301</b>	<b>1,293</b>	<b>1,355</b>	

### Irish Pigmeat Exports, 1998 - 2009 ('000 tonnes cwe)

000 tonnes cwe	1998	1999	2000	2001	2002	2003	2004	2005	2006	2007	2008**	2009(e)	2010(e)
<b>Total</b>	<b>130</b>	<b>121</b>	<b>130</b>	<b>150</b>	<b>135</b>	<b>132</b>	<b>119</b>	<b>129</b>	<b>139</b>	<b>142</b>	<b>138</b>	<b>127</b>	<b>147</b>
of which to:													
<b>UK</b>	<b>72</b>	<b>50</b>	<b>64</b>	<b>75</b>	<b>76</b>	<b>67</b>	<b>65</b>	<b>71</b>	<b>76</b>	<b>80</b>	<b>78</b>	<b>80</b>	<b>73</b>
<b>Cont. EU</b>	<b>45</b>	<b>36</b>	<b>42</b>	<b>61</b>	<b>37</b>	<b>32</b>	<b>27</b>	<b>33</b>	<b>35</b>	<b>38</b>	<b>37</b>	<b>37</b>	<b>40</b>
- Germany	16	14	15	18	12	13	11	13	11	10	10	9	9
- France	10	5	5	16	8	4	3	4	7	7	6	6	7
- Italy	10	5	5	9	6	5	3	4	3	7	4	4	5
- Other EU	9	12	17	18	11	10	10	12	14	14	17	18	19
<b>Int. Mkts</b>	<b>14</b>	<b>35</b>	<b>23</b>	<b>14</b>	<b>22</b>	<b>33</b>	<b>28</b>	<b>25</b>	<b>28</b>	<b>24</b>	<b>23</b>	<b>10</b>	<b>34</b>
- Japan	7	17	13	3	3	7	11	12	12	7	5	2	10
- USA	2	3	3	1	4	14	4	4	3	2	1	3	4
- Russia	2	5	4	6	11	8	6	2	6	7	7	0	7
- Other non-EU	3	10	3	4	4	4	7	7	7	8	10	5	13

Source: Bord Bia estimates

\*\* This figure does not take account of the impact of the product recall in December

### Irish Grade 'E' Pig Prices, 2001-2010(c/kg dw excl. VAT)

	2001	2002	2003	2004	2005	2006	2007	2008	2009	2010
	c/kg	c/kg	c/kg	c/kg	c/kg	c/kg	c/kg	c/kg	c/kg	c/kg
January	139.8	127.5	123.9	123.2	126.7	130.6	134.8	130.6	131	118.1
February	146.5	123.4	124.4	127.8	128.9	129.8	133	130.7	128.4	121.9
March	161.0	129.5	124.3	135.1	131.7	132.1	132.7	132.8	131	122.8
April	149.4	130.5	124.7	133.6	127.4	135.1	128.6	138.8	132.2	124.6
May	155.6	132.4	121.8	130.6	124.2	136.1	128.7	142.2	140.8	129.2
June	157.3	135.3	119.3	130.3	129.0	141.9	129.1	149.6	143.5	137.4
July	152.8	134.3	117.7	137.8	134.3	144.9	128.5	153.5	140.2	141.2
August	146.0	127.7	116.7	136.9	132.4	146	131.6	161	134.8	140.4
September	139.9	124.9	121.5	136.0	134.3	149	137.4	158.9	130.9	138.4
October	138.6	124.7	126.1	135.8	134.5	150.4	138.3	152.9	125.6	133.0
November	135.2	124.6	128.5	135.9	132.8	143.6	135.7	143.5	120.7	130.0
December	134.8	124.8	128.2	133.8	133.2	141	133.3	137.7	120.4	130.1
<b>YEAR</b>	<b>146.4</b>	<b>128.3</b>	<b>123.1</b>	<b>133.1</b>	<b>130.8</b>	<b>140.0</b>	<b>132.6</b>	<b>144.4</b>	<b>131.6</b>	<b>130.6</b>

Grade 'E' Pig Prices, 2010 V's 2009  
(c/kg dw excl. VAT)



Source: Department of Agriculture, Fisheries & Food

### Quarterly Pig Slaughtering at Meat Export Premises 1997 - 2010 ('000 head)

#### Total Pigs

	1997	1998	1999	2000	2001	2002	2003	2004	2005	2006	2007	2008	2009	2010
<b>First Quarter</b>	<b>676</b>	<b>706</b>	<b>884</b>	<b>813</b>	<b>782</b>	<b>817</b>	<b>733</b>	<b>644</b>	<b>663</b>	<b>652</b>	<b>671</b>	<b>644</b>	<b>600</b>	<b>618</b>
% of Total	24.6%	22.6%	26.5%	26.7%	24.5%	26.9%	25.9%	24.0%	25.3%	24.9%	26.1%	25.7%	25.4%	23.8%
<b>Second Quarter</b>	<b>664</b>	<b>721</b>	<b>811</b>	<b>738</b>	<b>786</b>	<b>743</b>	<b>704</b>	<b>648</b>	<b>603</b>	<b>656</b>	<b>635</b>	<b>635</b>	<b>575</b>	<b>638</b>
% of Total	24.1%	23.1%	24.3%	24.2%	24.6%	24.5%	24.8%	24.1%	23.0%	25.0%	24.7%	25.4%	24.3%	24.5%
<b>Third Quarter</b>	<b>702</b>	<b>889</b>	<b>828</b>	<b>757</b>	<b>823</b>	<b>736</b>	<b>709</b>	<b>728</b>	<b>695</b>	<b>670</b>	<b>638</b>	<b>623</b>	<b>630.0</b>	<b>674.0</b>
% of Total	25.5%	28.5%	24.8%	24.8%	25.8%	24.2%	25.0%	27.1%	26.5%	25.6%	24.8%	24.9%	26.7%	25.9%
<b>Fourth Quarter</b>	<b>708</b>	<b>802</b>	<b>812</b>	<b>740</b>	<b>805</b>	<b>742</b>	<b>688</b>	<b>664</b>	<b>657</b>	<b>641</b>	<b>624</b>	<b>599</b>	<b>558.0</b>	<b>672.0</b>
% of Total	25.7%	25.7%	24.3%	24.3%	25.2%	24.4%	24.3%	24.7%	25.1%	24.5%	24.3%	24.0%	23.6%	25.8%
<b>YEAR</b>	<b>2,750</b>	<b>3,118</b>	<b>3,335</b>	<b>3,048</b>	<b>3,196</b>	<b>3,038</b>	<b>2,834</b>	<b>2,684</b>	<b>2,618</b>	<b>2,619</b>	<b>2,568</b>	<b>2,501</b>	<b>2,363</b>	<b>2,602</b>